

22 Meriel Street Sans Souci, NSW

4 2 2

Exceptional value - a generous 738sqm block

Introducing a sunlit and expansive residence with old world charm, ideal for a growing families seeking space and comfort. Featuring a generous north facing backyard complete with a sparkling pool, this home is perfect for hosting gatherings and enjoying the outdoors. Positioned on a generous 738sqm block, this home comes with excellent possibilities to add tremendous value in the future, or to explore the opportunities for a knockdown/rebuild development (STCA). Conveniently located near the St George Sailing Club, public transport, charming cafes, Sandringham Beach, and Sans Souci Public School, this property offers a lifestyle of convenience and relaxation.

- Positioned on a generous 738sqm block in R3 zoning with a north facing backyard. Explore the opportunities for a knockdown/rebuild development (STCA)
- Expansive open-plan living, dining, and kitchen area featuring sleek floorboards throughout
- Generous kitchen boasting ample storage, a Bosch dishwasher, and elegant stone benchtops
- Located near the St George Sailing Club, public transport, charming cafes, Sandringham Beach, and Sans Souci Public School, this property offers a lifestyle of convenience and re...

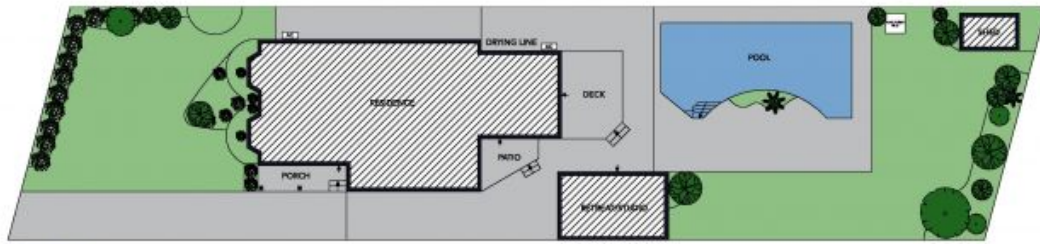
Price: UNDER CONTRACT | Ray Fadel
Council Rates: \$581.00 p/q
Water Rates: \$171.00 p/q



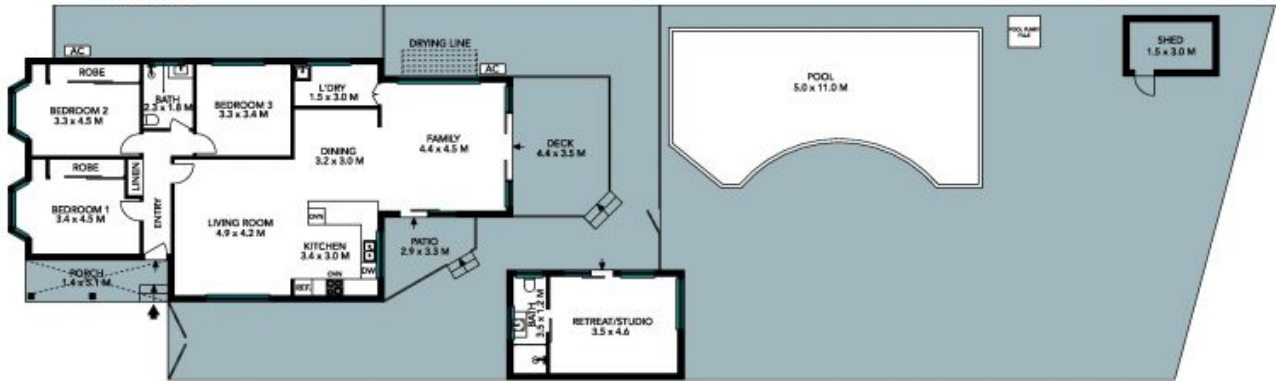
Ray Fadel
 0413 177 739



Chris Zdrilic
 0431 694 867



Site Plan



The site plan and floor plan are not to scale; measurements are indicative and in metres. Bushes and trees are placed for illustration purposes. Plans should not be relied on. Interested parties should make and rely on their own enquiries. All other information provided has been collected from reliable sources but cannot be guaranteed for accuracy.

22 Meriel Street
Sans Souci



The floor plan is not to scale; measurements are indicative and in metres. All features included in this 3D plan are for inspiration purposes only. This is not an exact replica of the property or the position of exterior elements. Plans should not be relied on. Interested parties should make and rely on their own enquiries.