



510/230 Victoria Road Gladesville, NSW



Sleek & Stylish Living

Situated in the luxury 'Glade & Stubbs' this well presented apartment delivers a stylish ultra-modern feel with sleek finishes throughout.

Set at the rear of the block, this ultra convenient property offers quality living that is just moments away from local shops, cafes, and restaurants, while also being close to public transport.

- Immaculate interiors deliver ideal flow and functionality
- Light-filled open living and dining area with timber flooring
- Stone top galley kitchen with dishwasher and gas appliances
- Large bedroom with walk-in robe
- Internal laundry
- Ducted air conditioning, intercom, basement storage
- Large communal rooftop entertaining area with BBQ facilities
- Real lane access to secure parking

Price: Sold By Team Keane

Council Rates: \$334.00 p/q

Water Rates: \$172.00 p/q

Strata Rates: \$974.00 p/q



Chris Keane

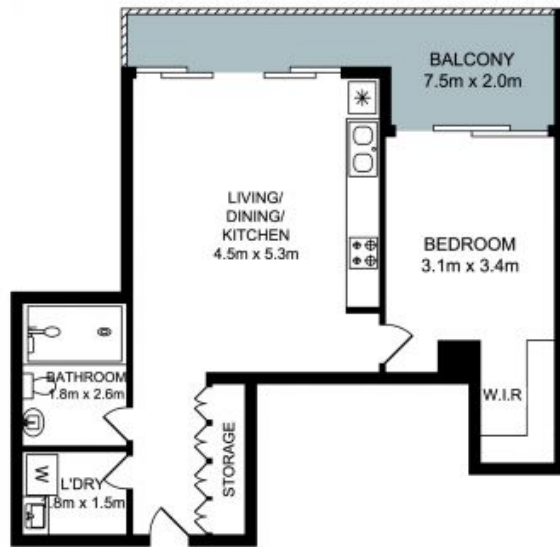
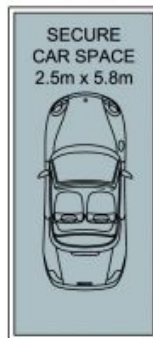
0497 102 114



Ari Ozbenian

0419 337 318

STORAGE
CAGE
2.6m x 1.2m



510/230 Victoria Road, Gladesville

STONE