

510/230 Victoria Road Gladesville, NSW



## Sleek & Stylish Living

Situated in the luxury 'Glade & Stubbs' this well presented apartment delivers a stylish ultra-modern feel with sleek finishes throughout.

Set at the rear of the block, this ultra convenient property offers quality living that is just moments away from local shops, cafes, and restaurants, while also being close to public transport.

- Immaculate interiors deliver ideal flow and functionality
- Light-filled open living and dining area with timber flooring
- Stone top galley kitchen with dishwasher and gas appliances
- Large bedroom with walk-in robe
- Internal laundry
- Ducted air conditioning, intercom, basement storage
- Large communal rooftop entertaining area with BBQ facilities
- Real lane access to secure parking

**Price:** Sold By Team Keane  
**Council Rates:** \$334.00 p/q  
**Water Rates:** \$172.00 p/q  
**Strata Rates:** \$974.00 p/q



**Chris Keane**

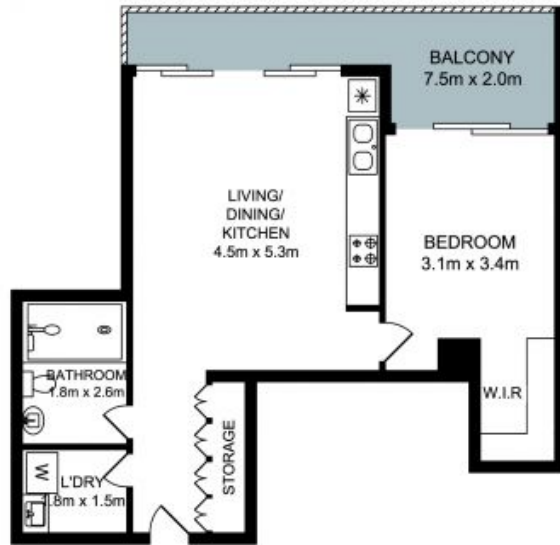
0497 102 114



**Ari Ozbenian**

0419 337 318

STORAGE  
CAGE  
2.6m x 1.2m



510/230 Victoria Road, Gladesville



The floor plan is for layout, measurements are indicative and not to scale. Builders should refer to a qualified professional for detailed plans and specifications. All other information provided has been collected from reliable sources and cannot be guaranteed for accuracy.