



G03/30 Cliff Road Epping, NSW

1 1 1

Modern Spacious 1-Bedroom Apartment in Central Location

Discover modern living in this near-new 1-bedroom apartment located in the central Epping area. This stylish residence boasts an array of features designed for comfort, convenience, and sophistication.

Key Features:

- Generous Bedroom: Enjoy spacious living with generous bedroom featuring built-in wardrobes
- Modern Kitchen: Indulge your culinary senses in a gourmet kitchen equipped with top-quality Miele appliances
- Open Plan Living: Experience a spacious and inviting open plan living and dining area, complete with a dedicated study nook
- Luxurious Bathroom: Immerse yourself with floor-to-ceiling tiles and a frameless shower screen, along with mirror cabinets
- Transport and shopping: 650M to Epping Station, and 450M to Coles Epping

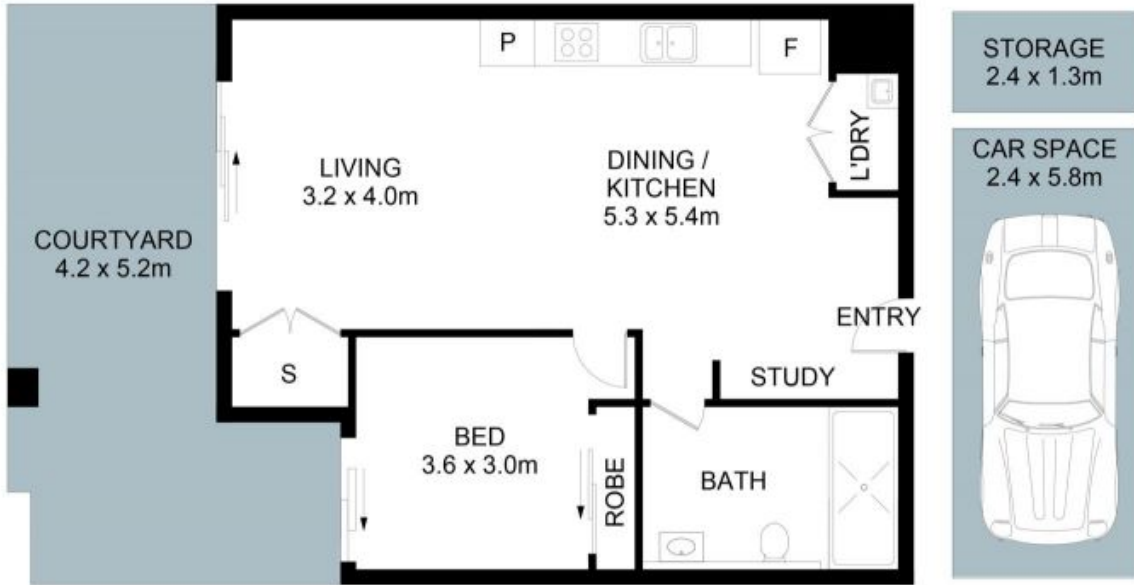
Price: \$650 Per Week

Available Date: 12/04/2024



Daniel Yao

8893 2245



The floor plan is not to scale; measurements are indicative and in metres. Exterior elements are not in position. Plans should not be relied on. Interested parties should make and rely on their own enquiries.



G3/30 Cliff Road, Epping

