



157A Midson Road Epping, NSW

4 

2 

3 

Exquisite Family Home in Prime Location!

Welcome to a quiet and convenient home well back from the street, this good size family home effortlessly caters to comfort, flexibility and outdoor entertaining. It's set on 989sqm high side of the street.

It is a mere 250m stroll to Epping West Public School, ensuring your children receive an exceptional education just steps away from your doorstep. Additionally, West Epping Park is only 350m away, offering endless recreational opportunities for the whole family. Commuting is a breeze with Epping station just approximately 1.5km away, connecting you to the CBD and beyond with ease.

- Boasting 4 spacious bedrooms including a spacious master with ensuite,
- 2 generous bathrooms, this home provides ample space for the whole family to live and thrive.
- Beyond the front porch interiors present large multi living zones
- Huge under cover carport plus plenty of car space
- Air conditioning, huge garden shed.

- Location:

Price:

Auction



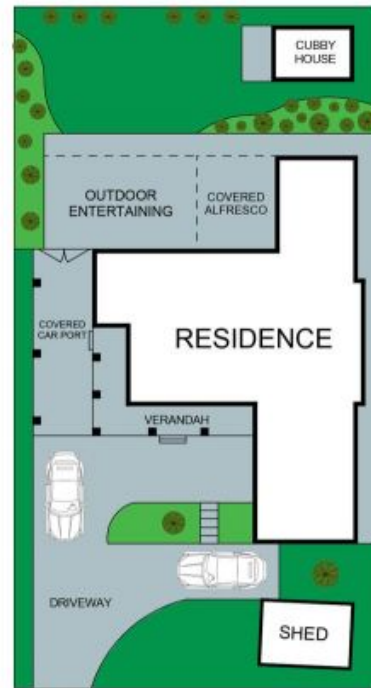
Juliet (Jiangmin) Chen

0408 997 997



Jessy Tian

0430 232 699



SITE PLAN
(NOT TO SCALE)

The floor plan is not to scale; measurements are indicative and in metres. Exterior elements are not in position. Plans should not be relied on. Interested parties should make and rely on their own enquiries.



157A Midson Road, Epping

