

201/81-86 Courallie Avenue Homebush West, NSW



Huge size and close station

Building N "Jenny"

This luxury apartment is located in a well-known complex called "Centenary Park"! Unit is on second floor with 3 huge bed rooms and extra study room. Open and bright living area brings entertainment space. The complex is moments to schools, shops, eateries & Flemington station.

Features:

- Massive combined living and dining area
- 3.5 meter wide car space
- Modern Caesar stone kitchen equipped with dishwasher
- Good sized bedrooms with built-ins, with en-suite in main
- Internal laundry, secure gated estate with intercom access
- One underground security car space
- Short walk to Flemington Station, Flemington Markets and local schools

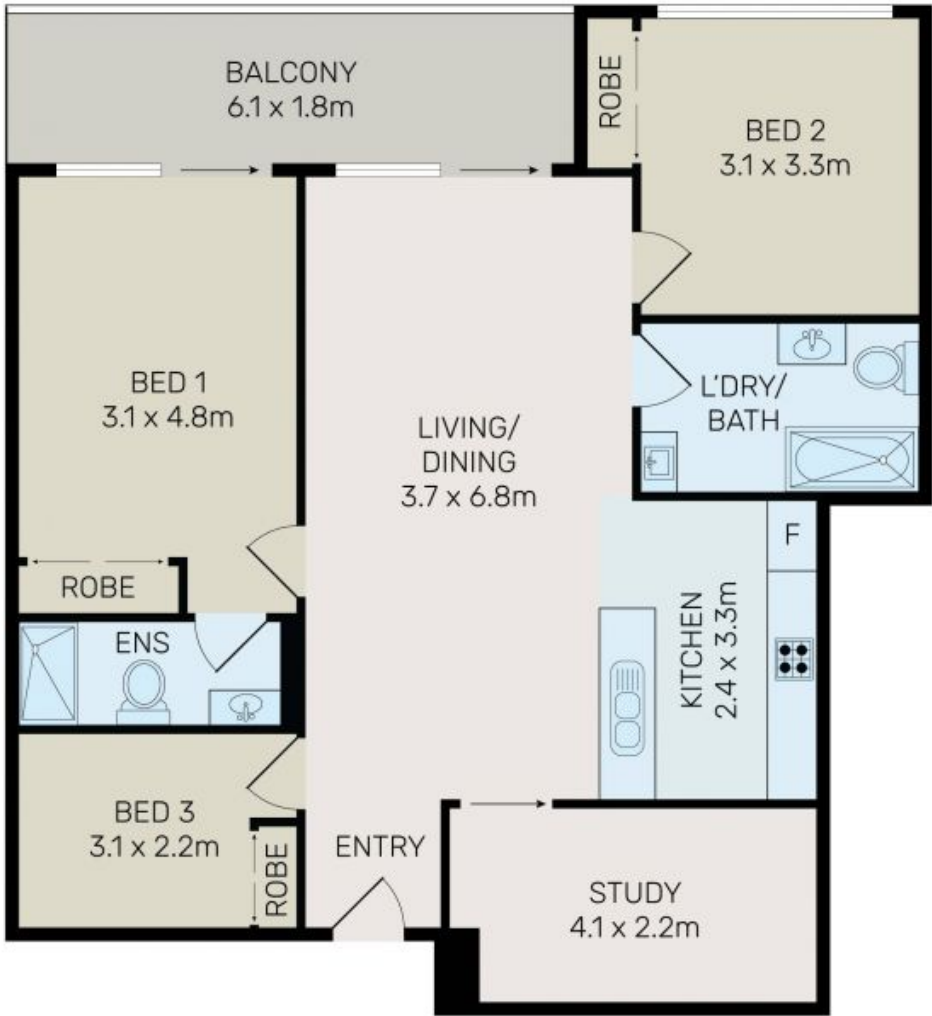
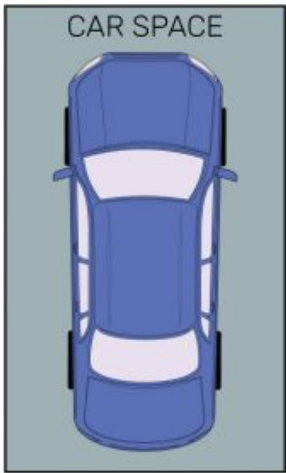
Price:

UNDER CONTRACT



Penny Jiang

0406 637 888



All information contained herein is gathered from all sources we believe to be reliable. However we cannot guarantee its accuracy and interested parties should rely on their own enquiries.



201N/81-86 Courallie Avenue, Homebush West