



2003/29 George Street Burwood, NSW 2 2 1

UNDER CONTRACT

Super Location!

The George sets new heights for luxury apartment living in Sydney's Inner West. Contemporary, sophisticated and visually appealing, it integrates beautifully with the surrounding streetscape.

The George features an exclusive Skypark Garden on level 4 for all residents to enjoy. Effortless flow to major retail precincts and transport networks ensures that your journey between home, work and play is always smooth.

Secure parking makes driving in and out hassle free and adequate amounts of lock-up storage are available

Property features:

- 2 extra sized bed rooms with wardrobes

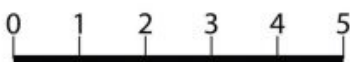
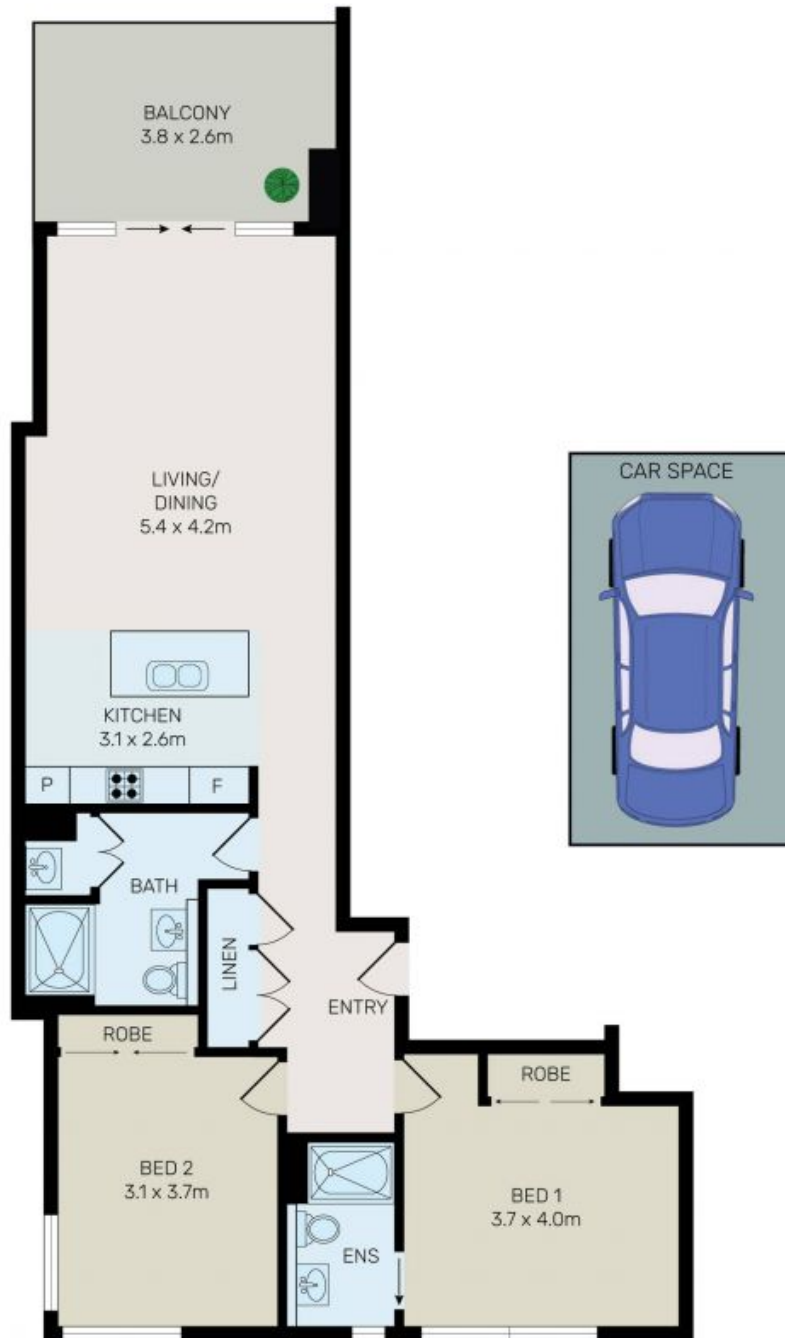
Price:

Awaiting Price Guide



Penny Jiang

0406 637 888



All information contained herein is gathered from all sources we believe to be reliable. However we cannot guarantee its accuracy and interested parties should rely on their own enquiries.



2003/29 George Street Burwood