

15/502-518 Canterbury Road Campsie, NSW



## Bright and Spacious 2 Bedroom Apartment

Nestled along Canterbury Road, this unit places you in the midst of Campsie's bustling hub, surrounded by a wealth of dining, shopping, and entertainment options.

With the Campsie Centre and a variety of local shops just a short stroll away, daily errands become a breeze. Explore diverse cuisines, fashion boutiques, and specialty stores right at your doorstep.

What truly sets this unit apart is its proximity to medical services. Canterbury Hospital is conveniently situated just across the road, ensuring that essential healthcare is always within reach. Campsie train station, just a short walk away, connects you to Sydney's CBD and beyond, making commuting a breeze.

Arrange a private viewing today and experience the unbeatable convenience for yourself. Contact us now to secure your spot in this sought-after urban oasis....

Price:

Sold and need more properties



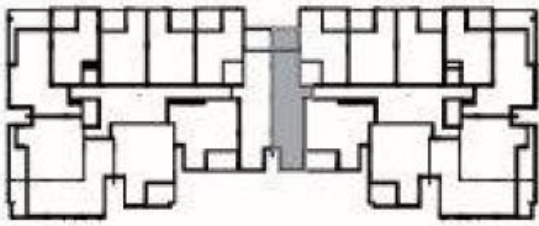
**Li (sammi) Fan**

0415 959 888

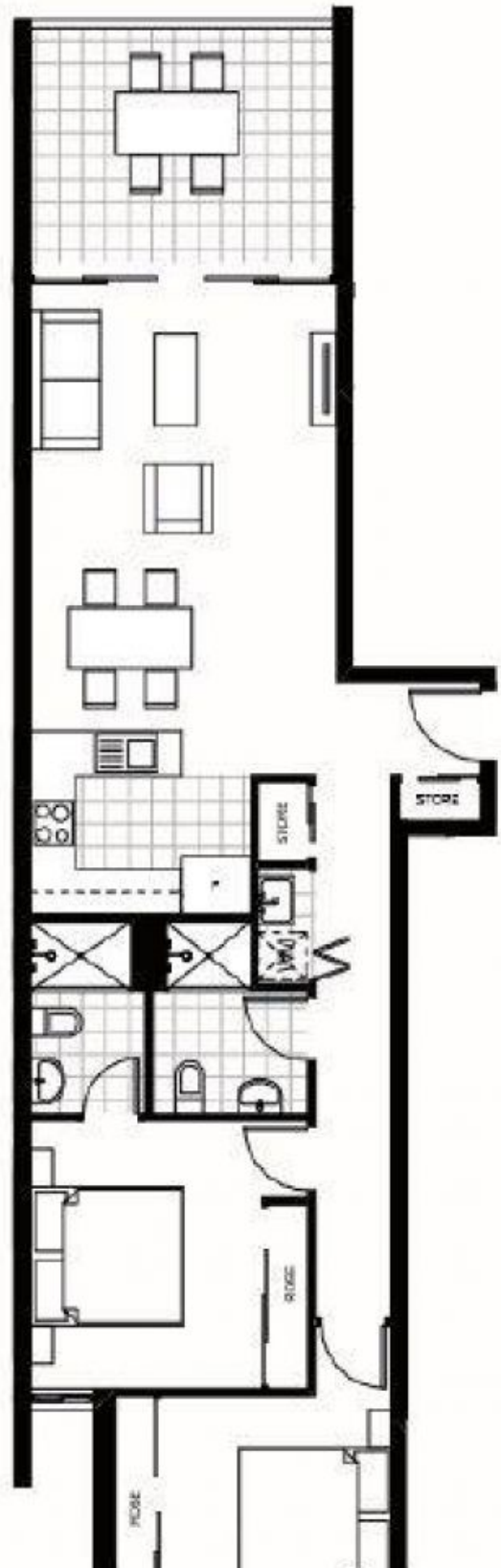


**Evy Ge**

0403 868 371



B09



UNITS: B09  
INTERNAL: 78m<sup>2</sup>  
COURTYARD: 12m<sup>2</sup>  
TOTAL: 90m<sup>2</sup>