



109/16 Hudson Street Lewisham, NSW 1 [bed icon] 1 [bath icon]

High Rental Return|Perfect Location

Experience the epitome of contemporary living in this sleek and ultra-modern "LUNA" residence, offering spacious and low-maintenance lifestyle just moments away from all of Lewisham's conveniences. It is well-suited for either first-time homebuyers or investors.

Revel in the stylish ambiance created by the modern finishes that elevate apartment living to a whole new level. Ideally located just seconds from Lewisham West light rail station, this haven is surrounded by trendy cafes, award-winning restaurants, and bakeries.

Features:

- Open-plan design seamlessly flows to enclosed balcony perfect for entertaining.
- Stunning spacious living area flooded with natural sunlight
- Split-system reverse cycle air conditioning
- Internal laundry with dryer

Price: SOLD



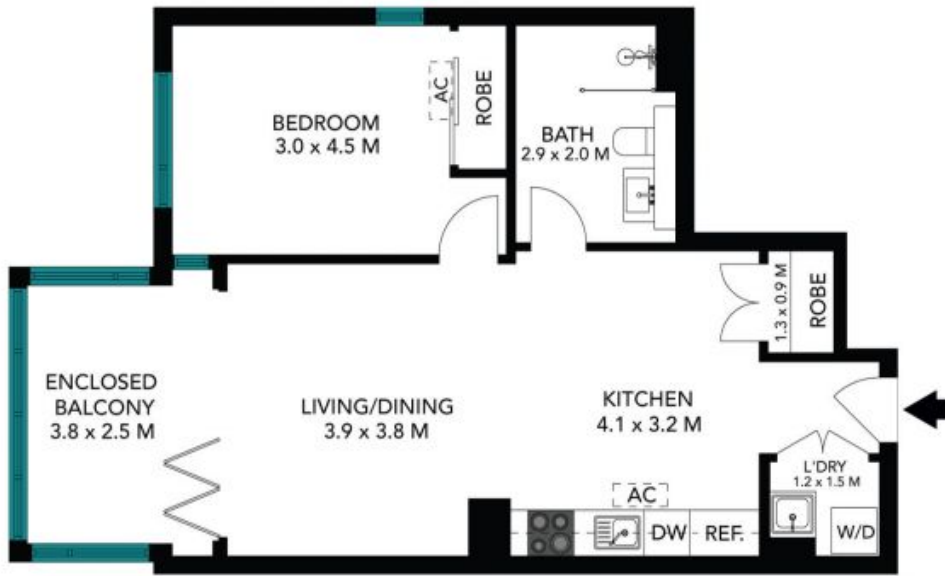
Mandy (yan) Li

0421 220 608



Li (sammi) Fan

0415 959 888



Unit 109/16 Hudson Street
Lewisham



The floor plan is not to scale, measurements are indicative and in metres. All features included in this 3D plan are for inspiration purposes only. This is not an exact replica of the property or the position of exterior elements. Plans should not be relied on. Interested parties should make and rely on their own enquiries.