



1602/29 George Street Burwood, NSW

2  2  1 

### North Facing|180 Degree Urban View|Prime Location

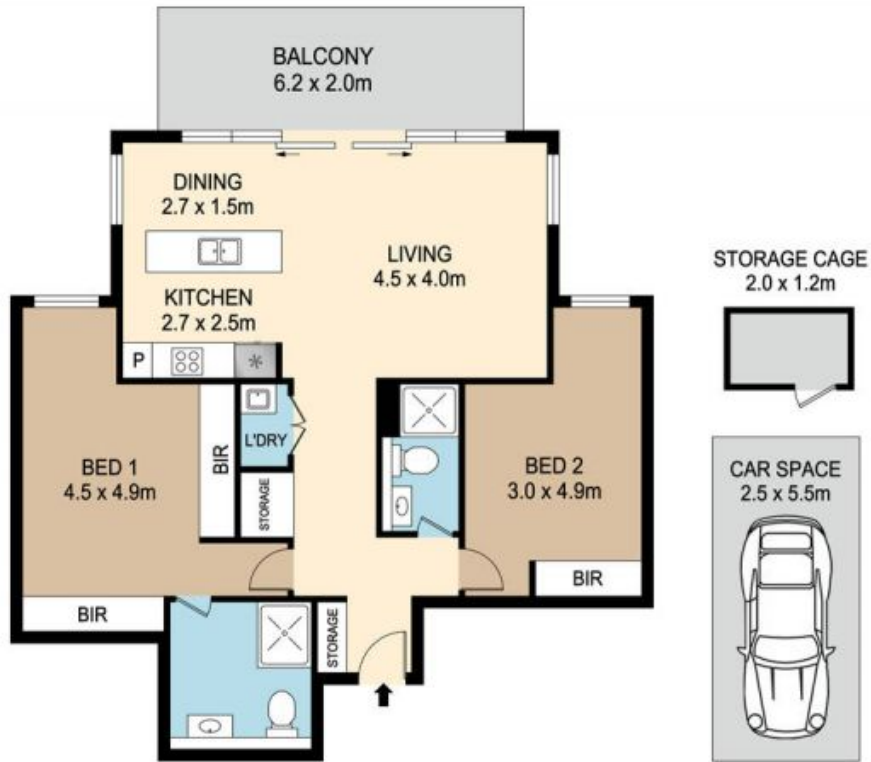
Price: SOLD

The George sets new heights for luxury apartment living in Sydney's Inner West. Contemporary, sophisticated and visually appealing, it integrates beautifully with the surrounding streetscape.



**Li (sammi) Fan**

0415 959 888



**1602/29 GEORGE STREET, BURWOOD**



DISCLAIMER : PLANS SHOWN ARE FOR MARKETING PURPOSES ONLY. ALL DIMENSIONS ARE APPROXIMATE AND NOT TO SCALE. THEY ARE SUBJECT TO ERRORS AND INACCURACIES AND NO LIABILITY WILL BE ACCEPTED. INTERESTED PARTIES SHOULD MAKE THEIR OWN INQUIRES.

