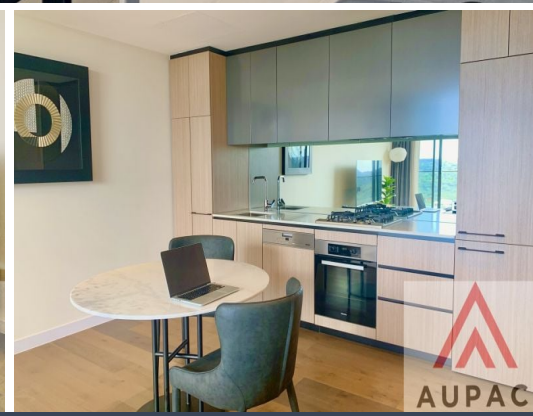


STONE



2301/120 Herring Road Macquarie Park, NSW



Luxurious one bed apartment in prime location on level 23 with city views

One Twenty Macquarie is the grandest tower ever built in this growing urban living hub, offering 23 levels of sky-high luxury living in the cosmopolitan heart of Macquarie Park. The location is just 500m walk to Macquarie Centre and Macquarie University Train Station (just 3 stops to Chatswood). It is within walking distance to the highly regarded Macquarie University.

Price: 520 Negotiable
Available Date: 08/05/2020



Penny Jiang
0406 637 888