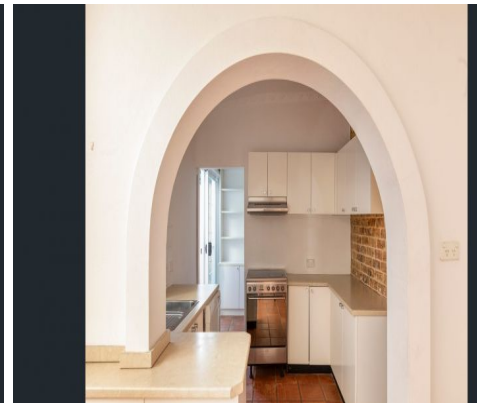
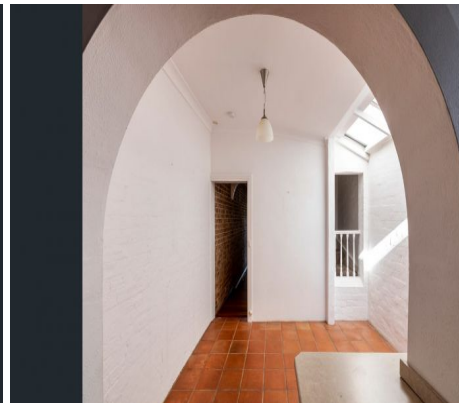
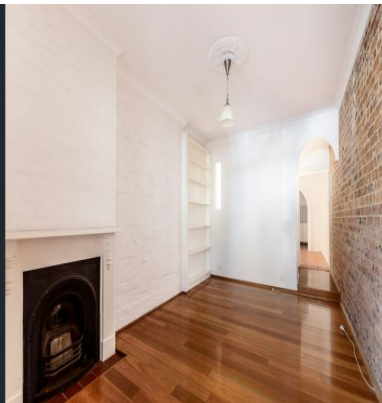


STONE



25 Colbourne Avenue Glebe, NSW



City Fringe Living

APPLICATIONS MUST BE SUBMITTED ONLINE AT www.realestate.com.au

In a top location on the edge of the city, this is an ultra convenient courtyard residence.

- City fringe home, set over 2 levels
- Updated kitchen w/ dishwasher
- Wide street & private rear courtyard
- Ideal north-facing outdoor space
- Separate study nook, internal laundry
- Spacious living & dining spaces
- Built-in wardrobes, plenty of storage
- Walk-everywhere lifestyle + parking

Price: Deposit taken
Bond: \$3,920
Available Date: 12/04/2024



Olivia Makhlouf

0412 630 727



Sheree Davies

0421 144 022