

67/10 Hinder Street Gungahlin, ACT

2 2 1

A convenient and functional 116sqm apartment

Experience your vibrant, functionality and peaceful lifestyle in the heart of Gungahlin with this exquisite apartment with Gungahlin Town Square and the Canberra Light Rail at your ground floor. Bathed in natural light, this home boasts a bright blend of white walls and open-plan space, fostering a semi-contemporary atmosphere.

Its straightforward layout combined with a shared living-dining area facing your unit balcony makes for plenty of opportunity to furnish the home to your liking. Its convenient location makes it perfect for the urban worker and apartment investor

Utilise your C-sized kitchen seamlessly into your living space, creating a versatile hub for daily living and entertaining alike. With ample storage solutions throughout your home, this apartment caters to all your lifestyle needs, whether it's unwinding after a long day, working, or hosting friends and family.

Perfectly situated within walking distance of Gungahlin Town Centre as close as ground floor, residents enjoy unparalleled access to all the shops, restaurants and cafes, transport options, schools and other amenities. Surrounded by plenty of nearby outdoor activities such as Yerrabi Pond and other walking paths, this home provides you the fantastic blend th...

Price: \$515,000



Jess Doolan

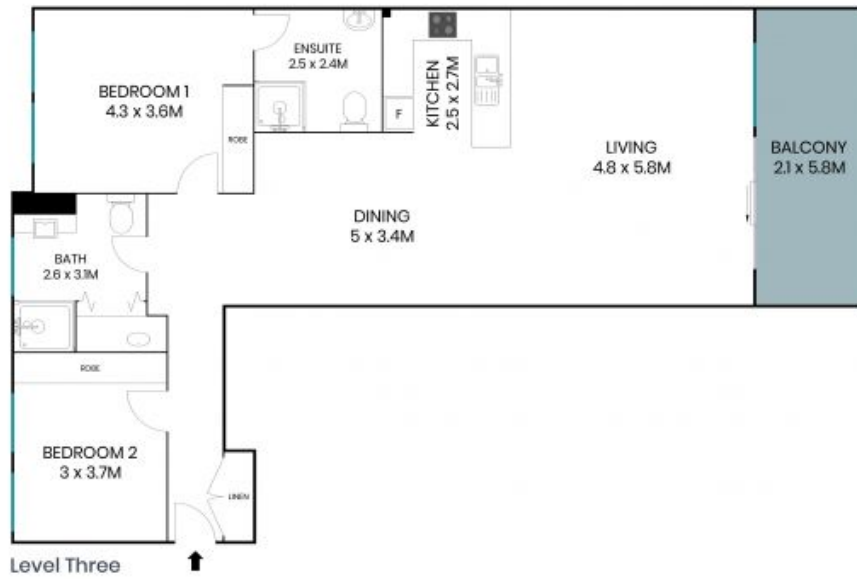
0477 775 773



Alex Ford

0487 382 549

67/10 Hinder Street
Gungahlin



The site plan and floor plan are not to scale; measurements are indicative and in metres. Bushes and trees are placed for illustration purposes. Plans should not be relied on. Interested parties should make and rely on their own enquiries. All other information provided has been collected from reliable sources but cannot be guaranteed for accuracy.

67/10 Hinder Street
Gungahlin



The floor plan is not to scale; measurements are indicative and in metres. All features included in this 3D plan are for inspiration purposes only. This is not an exact replica of the property or the position of exterior elements. Plans should not be relied on. Interested parties should make and rely on their own enquiries.