



2/47 Ethel Street Seaforth, NSW



## Spacious and sun filled two bedroom apartment

In a position of convenience across from the cosmopolitan cafes and the business precinct of Seaforth Village, this spacious sun filled 2 bed apartment occupies a sought after northeast corner on the elevated ground floor of a full brick boutique building of only 6. With trendy eateries, diverse shops and express city buses at the front door, stroll to Clontarf Beach and the Fisher Bay to Spit scenic walk.

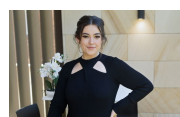
- Combined sundrenched living and dining opening to elevated undercover balcony
- Floating floorboards for easy maintenance with new carpet in bedrooms
- Stylish stone kitchen with gas cooking and dishwasher
- Generous main bedroom with cupboard, leafy outlooks
- Ample second bedroom with large built in wardrobe
- Designer bathroom with large glass shower
- Off street parking space, super convenient location

**Price:** Leased  
**Available Date:** 29/03/2024



**Sarah Cass**

0472 682 954



**Alicia Sudol**

02 9949 2822



PLANS ARE ONLY INDICATIVE OF LAYOUT AND SHOULD NOT BE TAKEN AS AN EXACT REPRESENTATION OF THE PROPERTY.  
DIMENSIONS, ASPECT AND ANY FLOOR AREAS GIVEN ARE APPROXIMATES ONLY.



**Seaforth**

**2/47 Ethel Street**

0 3 M

Disclaimer : The information contained herein has been gathered from the vendor of the property and professional service providers and we cannot verify its accuracy either way.