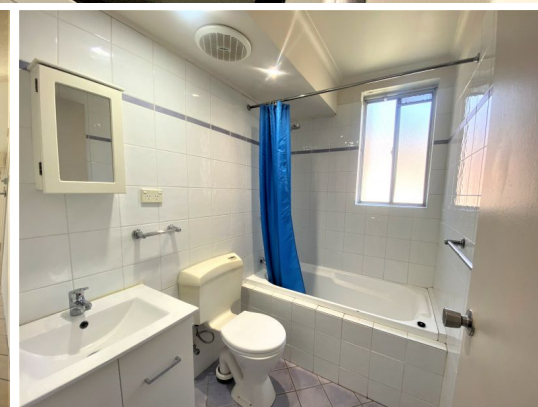




STONE



4/23 Santley Crescent Kingswood, NSW

2

1

2

Sought after on Santley

Looking for a well maintained first floor unit with a lock up garage. This unit is located within walking distance to the local shops, club, park, train station, eateries, University and more! Apply for this fresh and cozy unit online today!

Features include:

- 2 bedrooms with floating floors
- Built in robes to both bedrooms
- Split system AC in lounge area
- Updated kitchen with electric cooking
- Balcony
- Lock up garage underneath

Price: \$430.00 pw

Available Date: 25/03/2024

STONE Leasing Team
02 9630 8899