



162/208-226 Pacific Highway Hornsby, NSW 2  2  1 

Convenient Offering in 'Horizon Towers'

Nestled in the upscale "Horizon Towers," discover a modern, immaculately kept unit with everything you need within walking distance. From modern finishes, to ease of access from its 'minimal stairs required' location, don't miss out on this fantastic opportunity.

Featuring bright and airy interiors, generously sized bedrooms, and premium finishes, this unit is conveniently located just a brief walk from Hornsby's train and bus interchange, Westfield shopping centre, parks, and schools, offering the potential for both an exceptional home and a smart investment with promising growth and rental prospects.

Features:

- Generously spaced open-plan living and dining areas bathed in natural light from its east facing aspect.
- Master bedroom also comes with a full ensuite.
- 24-hour building security

Inspect: Saturday, 11th May 2024 1:15 - 2:15

Price: \$680,000 Must be SOLD !

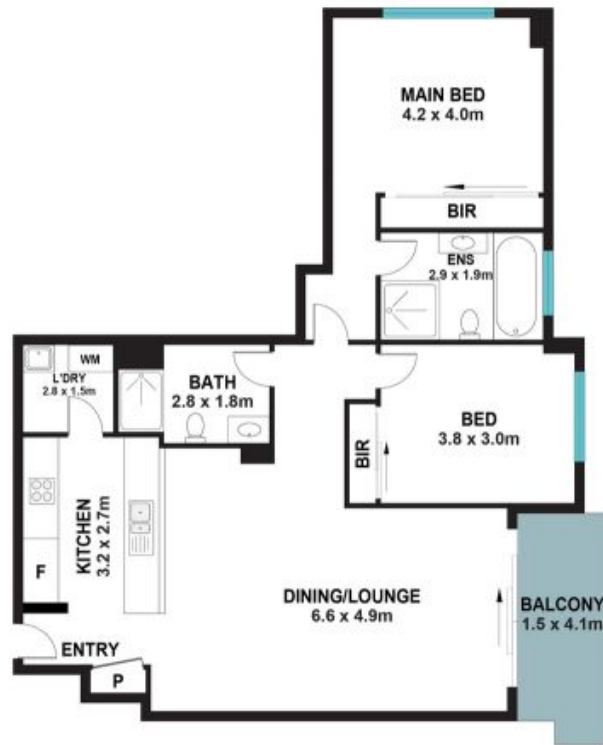
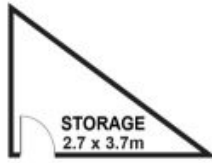


Adam Noakes

0450 753 268

162/208 Pacific Highway,
Hornsby

STONE



The floor plan is not to scale, measurements are indicative and in metres. Exterior elements are not in position. Plans should not be relied on interested parties should make and rely on their own enquiries. All other information provided has been collected from reliable sources but cannot be guaranteed for accuracy.