



55 Catherine Street Leichhardt, NSW



### Charming terrace home in premier lifestyle setting

Positioned along one of Leichhardt's most sought-after streets, this gorgeous two storey terrace combines subtle period character with modern appointments, functionality and comfort to provide a beautiful retreat, close to an array of lifestyle amenities. It's ideally set within walking distance of Annandale Public School and Norton Street's wide selection of shops, coffee spots and restaurants.

- Uniquely designed and flexible layout has comfortable lounge and dining zones
- Bright and spacious interiors enhanced by timber floorboards and high ceilings
- Inviting outdoor spaces include a covered alfresco setting and garden courtyard
- Centrally positioned kitchen equipped with gas cooktop and casual meals area
- Two oversized bedrooms, with built-in robes, private home office or third bedroom
- Neatly presented family bathroom, appointed with separate shower and bathtub
- Under house workshop/cellar with access to underground storage
- Rear lane access with off street parking

**Price:** \$1,800,000  
**Council Rates:** \$385.00 p/q  
**Water Rates:** \$324.00 p/q



**George Spiroglou**

0420 303 303



**Joseph Tropiano**

0401 002 211



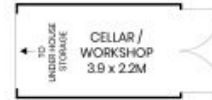
First Level



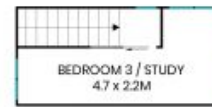
Site Plan



Entry Level



Lower Level

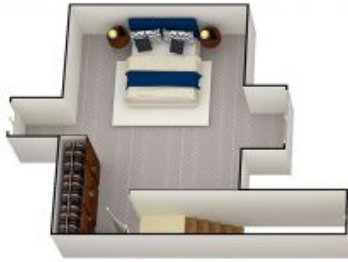


First Level



The site plan and floor plan are not to scale; measurements are indicative and in metres. Bushes and trees are placed for illustration purposes. Plans should not be relied on. Interested parties should make and rely on their own enquiries. All other information provided has been collected from reliable sources but cannot be guaranteed for accuracy.

55 Catherine Street  
Leichhardt



First Level



Entry Level



Lower Level



First Level



The floor plan is not to scale; measurements are indicative and in metres. All features included in this 3D plan are for inspiration purposes only. This is not an exact replica of the property or the position of exterior elements. Plans should not be relied on. Interested parties should make and rely on their own enquiries.