



6/6-12 Nursery Street Hornsby, NSW

2

1

1

**Sold by Geraldine Wang 0452 562 183**

Sold by Geraldine Wang 0452 562 183

Filled with natural light, this modern townhouse allows for wise use of multiple level spaces. Downstairs: showcases North facing and private courtyard for outdoor entertaining; a second toilet combined with internal laundry; separate dining room which could be used for a ground level bedroom, but also can be converted to open plan living space with lounge area. Upstairs: the North facing master bedroom boasts a walk in robe and sunlit balcony.

Spacious attic room for home office etc as a bonus. Basement boasts a locked up garage with huge storage space. This sensational low maintenance home is beautifully presented and conveniently located in a leafy and quiet setting and yet a short walk to Hornsby station, shops, parks and cafes. Simply move in and enjoy.

Features:

- Perfect northerly aspect to living areas and courtyard
- Beautifully presented throughout

Price:

Sold by Geraldine Wang 0452 562 183



**Geraldine (Xiao-Bin) Wang**  
0452 562 183

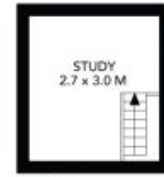
6/6-12 Nursey Street  
Hornsby



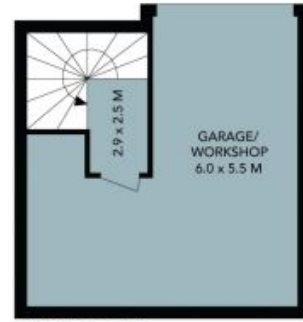
First Floor



Ground Floor



Attic



Basement

Internal Living: 99 sqm  
External Living: 51 sqm  
Total Living Area: 150 sqm



The floor plan is not to scale, measurements are indicative and in metres. Exterior elements are not in position. Plans should not be relied on. Interested parties should make and rely on their own enquiries. All other information provided has been collected from reliable sources but cannot be guaranteed for accuracy.

6/6-12 Nursey Street  
Hornsby

STONE



First Floor



Ground Floor



Attic



Basement

Internal Living: 99 sqm  
External Living: 51 sqm  
Total Living Area: 150 sqm



The floor plan is not to scale; measurements are indicative and in metres. All features included in this 3D plan are for inspiration purposes only. This is not an exact replica of the property or the position of exterior elements. Plans should not be relied on. Interested parties should make and rely on their own enquiries.