



210/20 Hilly Street Mortlake, NSW



Split Level Two Bedroom With Yard In Majors Bay Waterside For Sale

Majors Bay offers the perfect blend of lifestyle and location with the Yaralla Bay foreshore just minutes away. Pop up the road to a selection of local cafes, IGA and Ferry.

Features of this apartment include:

- Floor to ceiling window to yard with plenty of sunlight and green
- Open plan living and dining areas with sliding door access to yard
- Stylishly designed bathroom includes plenty of space and storage. Nib wall shelf, mirrored shaving cabinet with under cabinet lighting, and large shower recess
- Internal laundry with dryer
- Ducted Air Conditioning throughout

Inspect: Saturday, 11th May 2024 10:00 - 10:30
Saturday, 18th May 2024 10:00 - 10:30

Price: Contact Agent
Council Rates: \$332.00 p/q
Water Rates: \$171.41 p/q
Strata Rates: \$1,633.00 p/q



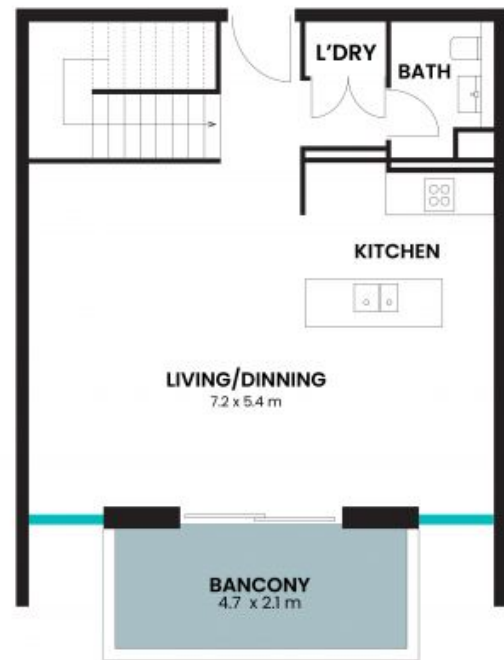
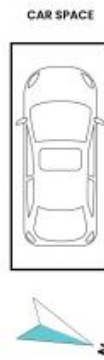
Sabrina (Xiaodan) Wang
0410 701 687

210/20 Hilly St
Mortlake

STONE



GROUND FLOOR



LEVEL 1

The floor plan is not to scale; measurements are indicative and in metres. Exterior elements are not in position. Plans should not be relied on. Interested parties should mark and rely on their own enquiries. All other information provided has been collected from reliable sources but cannot be guaranteed for accuracy.