



22A Hull Road Beecroft, NSW

5

2

4

Serene family comfort in Beecroft Public and Cheltenham Girls zone

Kept beautifully secluded on a hidden 1256sqm leafy parcel distanced from the street, this large family home's classically comfortable spaces have been reinvigorated while offering rewarding scope for further enhancement if desired. Its extensive yard, bright open layout with large window outlooks and flexible living rooms effortlessly meet today's family requirements, in one of the area's most desirable and premium lifestyle pockets - under a kilometre stroll to Beecroft station, shopping village, eateries and locally esteemed schools.

- Freshly painted interiors with resurfaced hardwood timber floors throughout
- Large central family living and dining area spotlighting private garden views
- Separate formal lounge area with exposed brick, adjoins to formal dining
- Well-proportioned kitchen with generous cupboard space and leafy outlook
- Two full bathrooms including a three-way main, and a master bed ensuite
- Versatile fifth bedroom, walk-in robe to master, built-in robes to other beds
- Downstairs access to oversize double garage, abundant underhouse storage

Price: Auction
Council Rates: \$592.60 p/q
Water Rates: \$171.41 p/q



Kevin Dearlove

0403 338 302

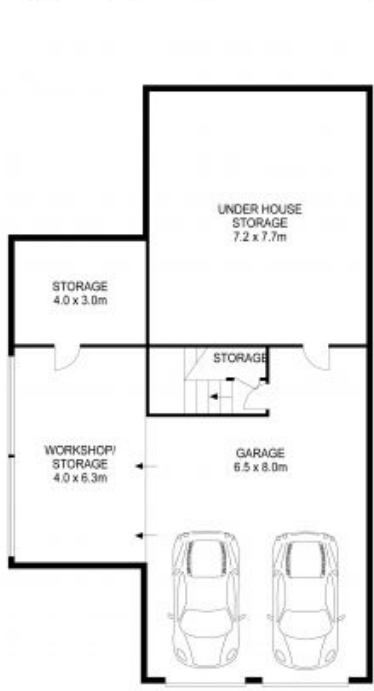


Brian Kong

0435 333 383

22A Hull Road, Beecroft

 5
  2
  2
  329m²
 1256m²



GROUND LEVEL



ENTRY LEVEL



SITEPLAN

THIS IS AN ARTIST'S IMPRESSION - ALL DIMENSIONS, LAYOUTS AND TREES ARE APPROXIMATE
 ALL INTERESTED PARTIES SHOULD MAKE AND RELY ON THEIR OWN ENQUIRIES

