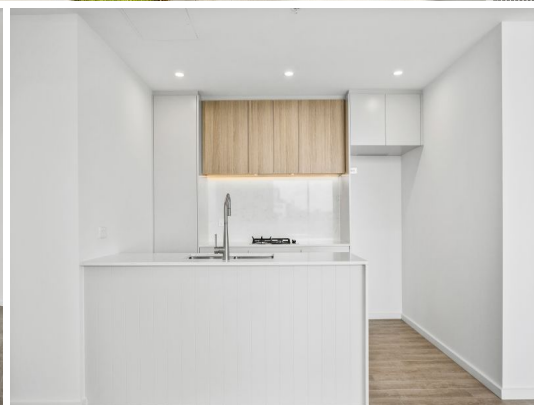
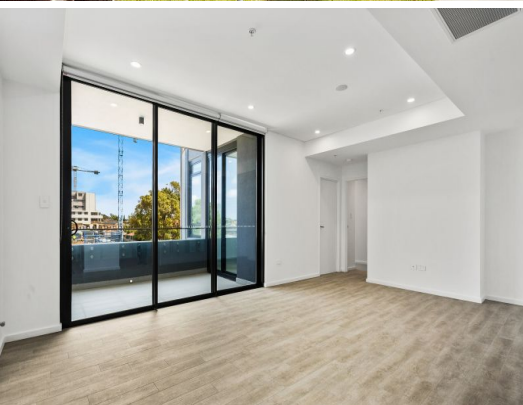


STONE



308/9 Wyuna Street Beverley Park, NSW

2 

2 

1 

## DEPOSIT TAKEN - Brand New Two Bedroom Apartment

The Park by MP6-A magnificent new residential addition to the area, offers a great opportunity to reside in Beverley Park, offers the ultimate lifestyle sanctuary.

- Two bedrooms fitted with built-in wardrobes
- Master bedroom features ensuite, access to balcony
- Caesarstone kitchen including gas cooktop and dishwasher
- Well appointed floor to ceiling tiled bathroom
- Open plan living and dining area flows to balcony
- Concealed laundry with dryer, ducted air-conditioning
- Lift access, single secure parking space plus storage cage
- Communal roof top terrace with BBQ and vegetable garden
- Easy access to Aldi, Beverley Park Golf Course and St George Leagues Club

**Price:** \$800 pw  
**Bond:** \$3,200  
**Available Date:** 23/03/2024



**Gerry Filas**

0419 603 623