

37 Kalua Drive Chittaway Bay, NSW

4 2 3

Waterfront reserve beauty!

- Functional floor plan with spacious living and dining options. Beautiful timber features throughout the home with wood burner fireplace
- Lock up car garage, garden shed and ample off street parking
- Stunning outdoor lifestyle, unobstructed views of Tuggerah Lakes
- 809m2 waterfront reserve block

View: By Appointment
 Agency: Stone Real Estate
 Agents: Reece and Volkan

Price: \$1,200,000 - \$1,250,000
Council Rates: \$300.00 p/q
Water Rates: \$427.00 p/q



Volkan Akintetik

0499 830 247



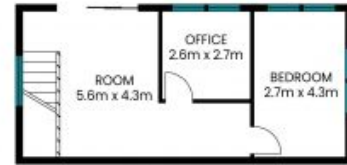
Reece Caira

0431 013 342

37 Kalua Drive
Chittaway



Ground Floor



First Floor

Internal Area: 188 sqm
External Area: 29 sqm
Garage Area: 18 sqm
Total Area: 235 sqm

PLEASE NOTE: These Floor and Site Plans have been generated for marketing purposes and are to be used as a guide only. While all care is taken, no guarantee can be given in respect of accuracy, sizes and dimensions are approximate, actual may vary.