



27 Addison Road Manly, NSW

3

3

2

### Pinnacle of luxury on Manly's exclusive Eastern Hill

Uncover the pinnacle of luxury living which was restored and sympathetically added to by the multiple award-winning dream team of Chrofi Architects designed by Arent&Pyke. This beautifully renovated 1920's-style home is the perfect blend of timeless elegance and modern convenience tucked away on Manly's exclusive Eastern Hill.

This property features high ceilings, hardwood floors and a state-of-the-art kitchen equipped with superior Smeg appliances and a bespoke built-in Fisher & Paykel fridge. The zoned ducted air-conditioning and cosy fireplace assures absolute comfort inside, whilst you admire your outdoor garden surroundings meticulously designed by Dangar Barin Smith.

Price:

Contact Agent



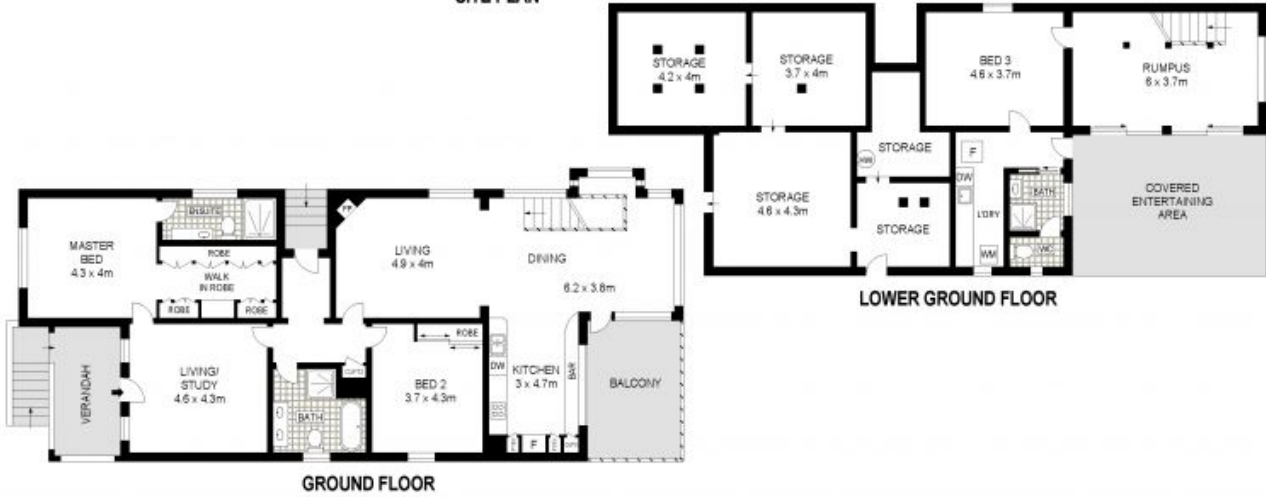
**Tim Mumford**

0421 942 693

- Classic 1920s home newly renovated with modern finishes
- Multiple living areas, second living room with feature fireplace



**SITE PLAN**



**GROUND FLOOR**

**LOWER GROUND FLOOR**

Dimensions are approximate. All information contained is gathered from sources we believe to be reliable. However we cannot guarantee its accuracy and interested persons should rely on their own enquiries.  
www.visionphoto.com.au



**27 ADDISON ROAD, MANLY**

APPROX. INTERNAL FLOOR AREA: 288 SQM