



18A Victoria Street Greenwich, NSW 1 1

MORE THAN AN APARTMENT - IT'S YOUR NEW HOME

Enjoy the evenings watching the sunset over Lane Cove River from this completely renovated, private residence. A space of elegance, comfort and convenience ideally positioned on the ground floor with level access via your private courtyard garden. This stylish retreat is peacefully set overlooking Mann's Point Reserve.

Features:

- Own private entry
- Ample street parking
- A short walk to Greenwich Ferry Wharf & Baths
- Beautiful foreshore walking tracks & parks
- Convenient local bus service to Lane Cove, Greenwich shops, North Sydney, Wollstonecraft station and North Shore Hospital
- Polished cork floors throughout
- Sandstone feature walls and exposed beams
- Sliding doors to attractive garden setting

Price: \$640 per week
Bond: \$2,560
Available Date: 06/04/2024



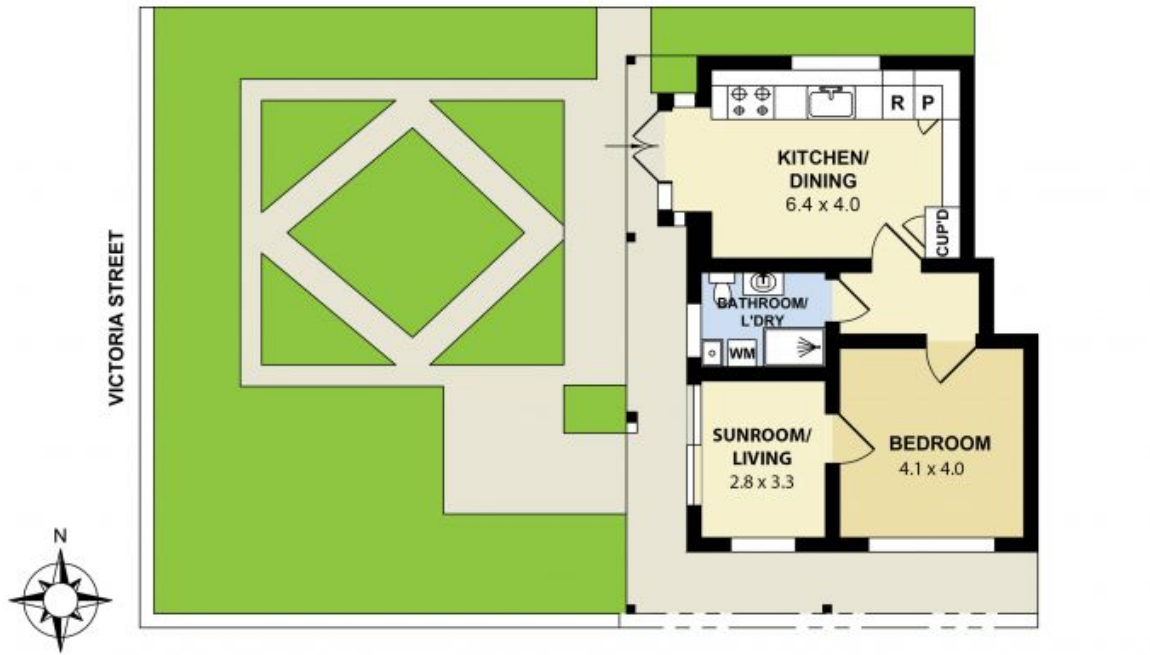
Jaydn Frintzilas

0468 998 294



Georgina Williams

0434 808 839



18A Victoria Street, Greenwich

Measurements are approximate. Not to scale. Illustrative purposes only.
We do not take any responsibility for any information supplied.

