

STONE



39A Westbourne Street Stanmore, NSW

5 

4 

2 

Outstanding new duplex featuring exquisite architecture

Raising the bar for modern duplex design, this meticulously constructed home combines a light-filled and spacious interior with a stylish contemporary aesthetic. Sophisticated, designer finishes and a palette of natural materials blend seamlessly with premium amenities for effortless family living and entertaining. A short walk away, you'll find Stanmore's cafes and train station, as well as Leichhardt's lively Norton Street.

- Herringbone patterned engineered timber floors, custom cabinetry, and stone details
- Sunlit living area with an EcoSmart fireplace, separate kitchen/dining space
- Sliding glass doors open to an entertainers' terrace with a barbecue kitchen
- Stylish curved stone island kitchen equipped with Smeg/Asko appliances, butler's pantry
- Four spacious bedrooms with sleek wardrobes, multipurpose studio above garage
- Primary bedroom features a walk-in closet and elegant full ensuite with reeded glass panels
- Rear lane access to a double garage with an office/bedroom and ensuite above

Auction: 18/05/2024 02:00 pm

Price: Contact Agent



Ian Dawson

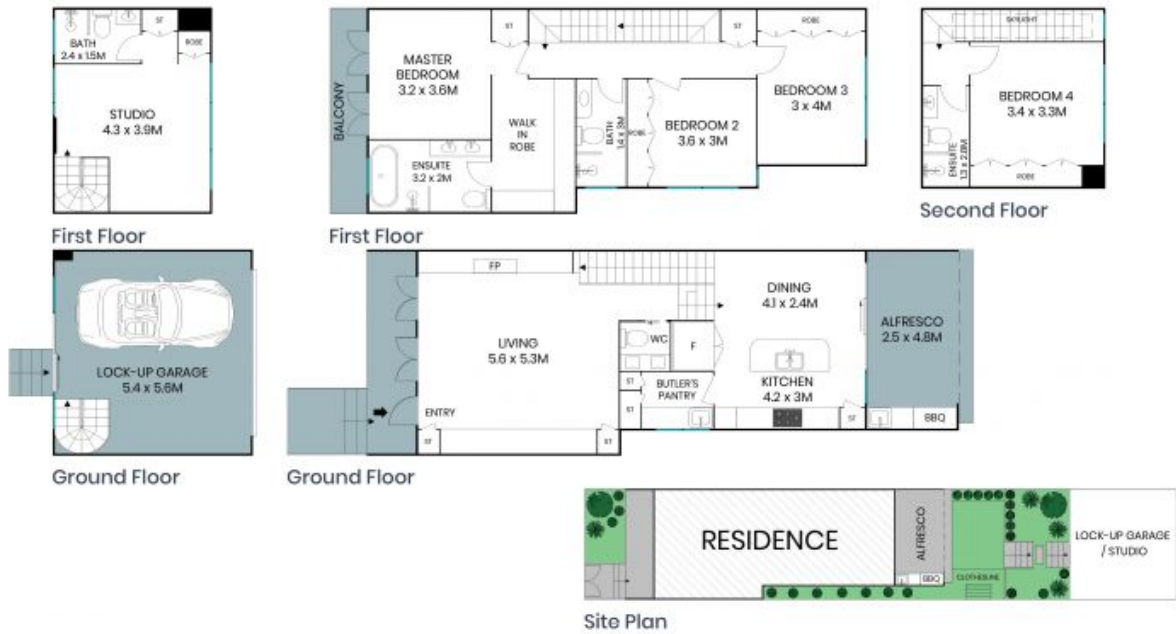
0452 640 338



George Spiroglou

0420 303 303

39A Westbourne Street
Stanmore



The site plan and floor plan are not to scale; measurements are indicative and in metres. Bushes and trees are placed for illustration purposes. Plans should not be relied on. Interested parties should make and rely on their own enquiries. All other information provided has been collected from reliable sources but cannot be guaranteed for accuracy.

39A Westbourne Street
Stanmore



First Floor



First Floor



Second Floor



Ground Floor



Ground Floor



The floor plan is not to scale; measurements are indicative and in metres. All features included in this 3D plan are for inspiration purposes only. This is not an exact replica of the property or the position of exterior elements. Plans should not be relied on. Interested parties should make and rely on their own enquiries.