

1601/29 George Street Burwood, NSW



North Facing|Prime Location|District View

The George sets new heights for luxury apartment living in Sydney's Inner West. Contemporary, sophisticated and visually appealing, it integrates beautifully with the surrounding streetscape.

The George features an exclusive SkyPark Garden on level 4 for all residents to enjoy. Effortless flow to major retail precincts and transport networks ensures that your journey between home, work and play is always smooth.

Property features:

- Modern design high level apartment with fantastic urban views
- The property can go through from south to north, good for air flow
- Timber floor board in living room, carpet in bedroom
- Huge living area with high ceiling and all sliding window surround
- Open kitchen with Stainless steel appliances, gas stove, electric oven and stone bench tops
- 2 extra sized bedrooms with wardrobes

Price:

Under Contract



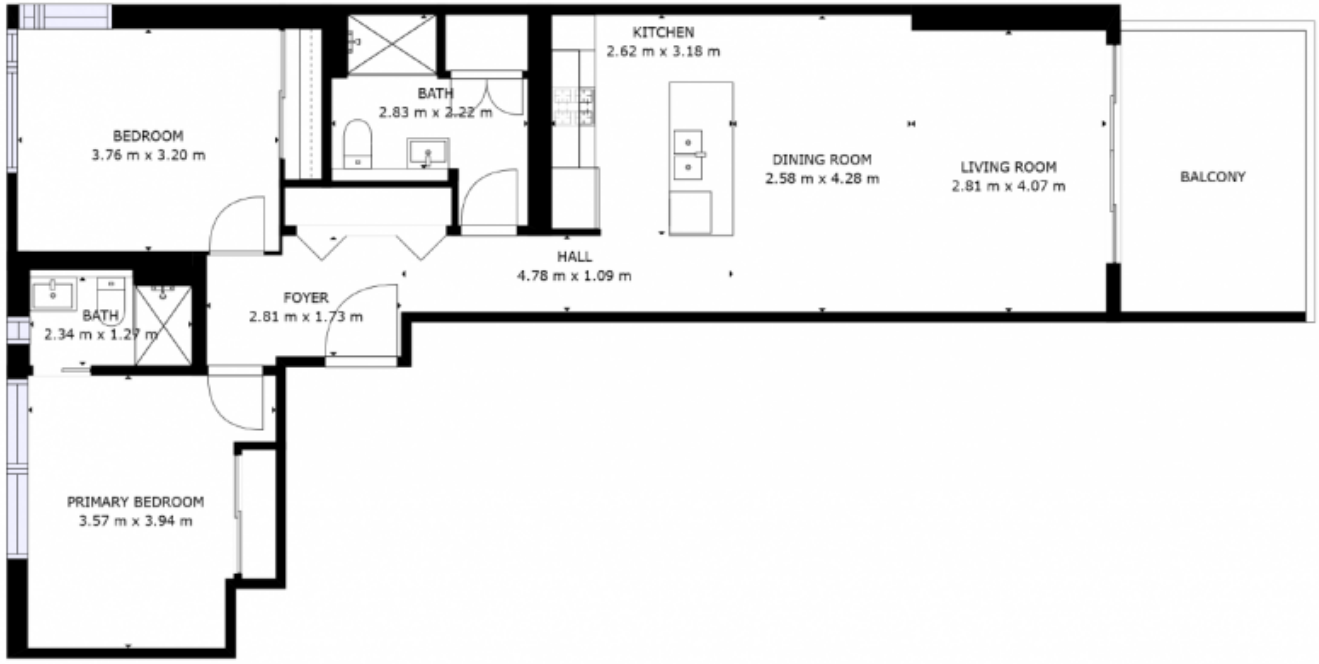
Li (sammi) Fan

0415 959 888



Mandy (yan) Li

0421 220 608



FLOOR 1