

86 Cherry Road Eleebana, NSW 5 3 4

Country living by the lake on three lush acres

Indulge in the coveted Cherry Road lifestyle with this exquisite home nestled on almost three acres. Boasting a contemporary new kitchen, this two-level haven is cocooned in lush native gardens. Picture-perfect for families, it features a sun-drenched north-facing deck, a firepit for chilly evenings, and a pool with a heated spa. With ample space for everyone to unwind and explore, this is the epitome of country living by the lake.

- Stunning new kitchen with quality appliances and stone benches
- Ducted a/c, solar electricity panels, double garage plus 6.5m x 9.5m shed
- Stretch out in the open plan living/dining room or retreat to the family room
- Two bedrooms on main level including master with ensuite and deck
- Three robed bedrooms upstairs served by updated family bathroom
- Two paddocks with gates, electric fencing, goat shed, sewerage system
- Entertainer's delight with BBQ patio, saltwater pool and heated spa
- 1200m ? Eleebana boat ramp, 1500m ? Eleebana Public School

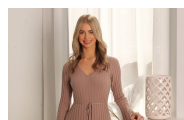
Price:

Contact Agent



David Tanchevski

02 4089 1111



Courtney Matheson

0400 768 103

86 Cherry Road
Eleebana

STONE

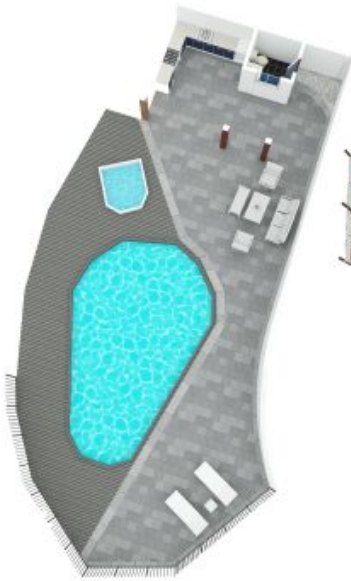


Site Map



The site plan and floor plan are not to scale; measurements are indicative and in metres. Bushes and trees are placed for illustration purposes. Plans should not be relied on. Interested parties should make and rely on their own enquiries. All other information provided has been collected from reliable sources but cannot be guaranteed for accuracy.

86 Cherry Road
Eleebana



Pool Area



Floor 1



Floor 2



Shed

The site plan and floor plan are not to scale; measurements are indicative and in metres. Bushes and trees are placed for illustration purposes. Plans should not be relied on, interested parties should make and rely on their own enquiries. All other information provided has been collected from reliable sources but cannot be guaranteed for accuracy.