

1301/100 Musgrave Street Kirra, QLD



Residences that define modern elegance

Welcome to The Emerson Penthouse, Kirra's most exclusive address, where luxury living reaches new heights.

A lavish space spanning 500 square meters, offers unparalleled grandeur and sophistication. With parking for up to four cars, a true indulgence for the discerning few. The lofty 3.2 meter ceilings add a sense of openness and elegance, setting this penthouse apart as the pinnacle of architectural excellence.

Hirsch & Faigen continues its legacy of pioneering excellence on the Southern Gold Coast with Emerson, a truly boutique edition of luxurious residences at Kirra. Rothelowman, Brisbane's premier architecture studio, brings the project to life both inside and out, combining the understated elegance of a classic beachside aesthetic interpreted in a thoroughly modern way for contemporary Kirra living.

Located parkside at 100 Musgrave Street, looking over the canopy of Norfolk Pines towards an unspoilt Kirra Beach, Emerson features sophisticated amenities that enrich a social, active and productive lifestyle. Thoughtfully crafted living spaces are a study in flexibili...

Price:

Contact Agent



Rebecca Leo

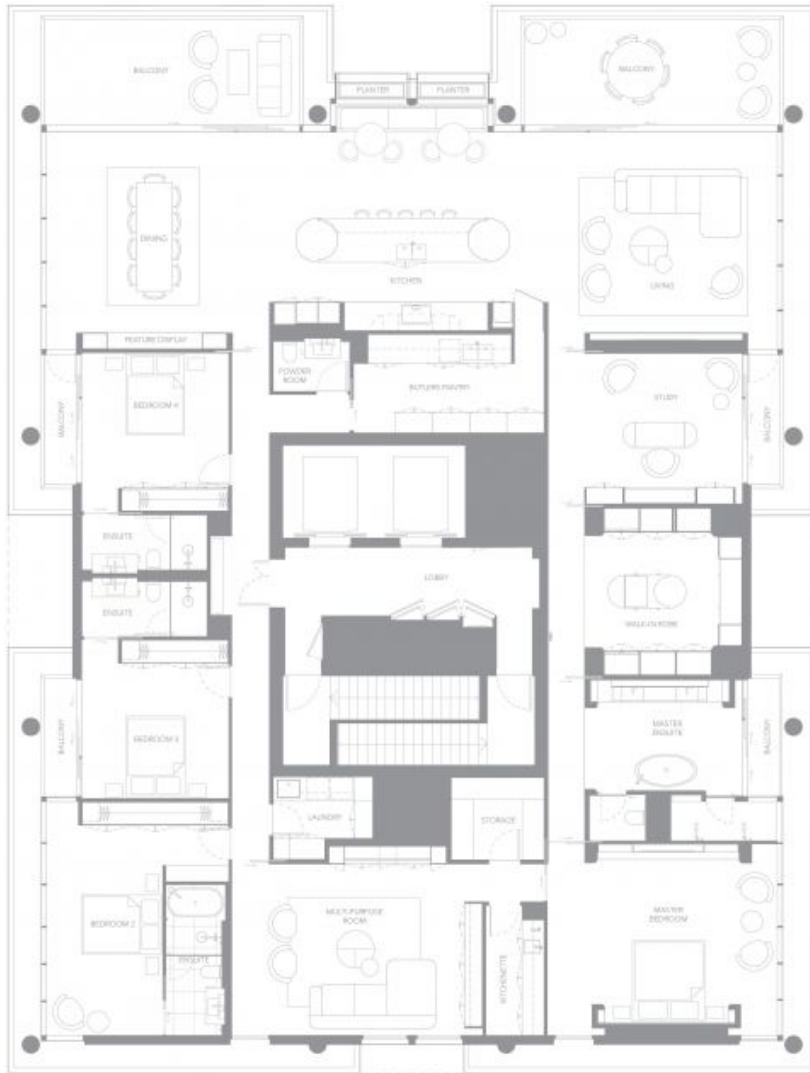
0419 880 822

Penthouse
4 bedrooms

INTERIOR
437sqm
EXTERIOR
58sqm
TOTAL
495sqm



PERCY PEASE PARK



0 1m 2m 5m

100 MUSGRAVE STREET, COOLANGATTA, QLD, 4225
The floorplan including furniture, floor measurements and dimensions are approximate and for illustrative purposes only.