



6 Gullane Close Heddon Greta, NSW 4 2 2

### Four bedroom home in lifestyle estate

INSPECT - click the link below to be register and be notified of inspection times  
 APPLY - To avoid missing out we welcome you to pre apply via [tenantoptions.com.au](http://tenantoptions.com.au).  
 If you pre apply please ensure you register to attend the open homes. We do not accept any other form of application.

Quality built home located on a family friendly quiet cul-de-sac in Avery's Rise Estate. Full of contemporary comforts and easily maintained, it's the perfect backdrop to family life.

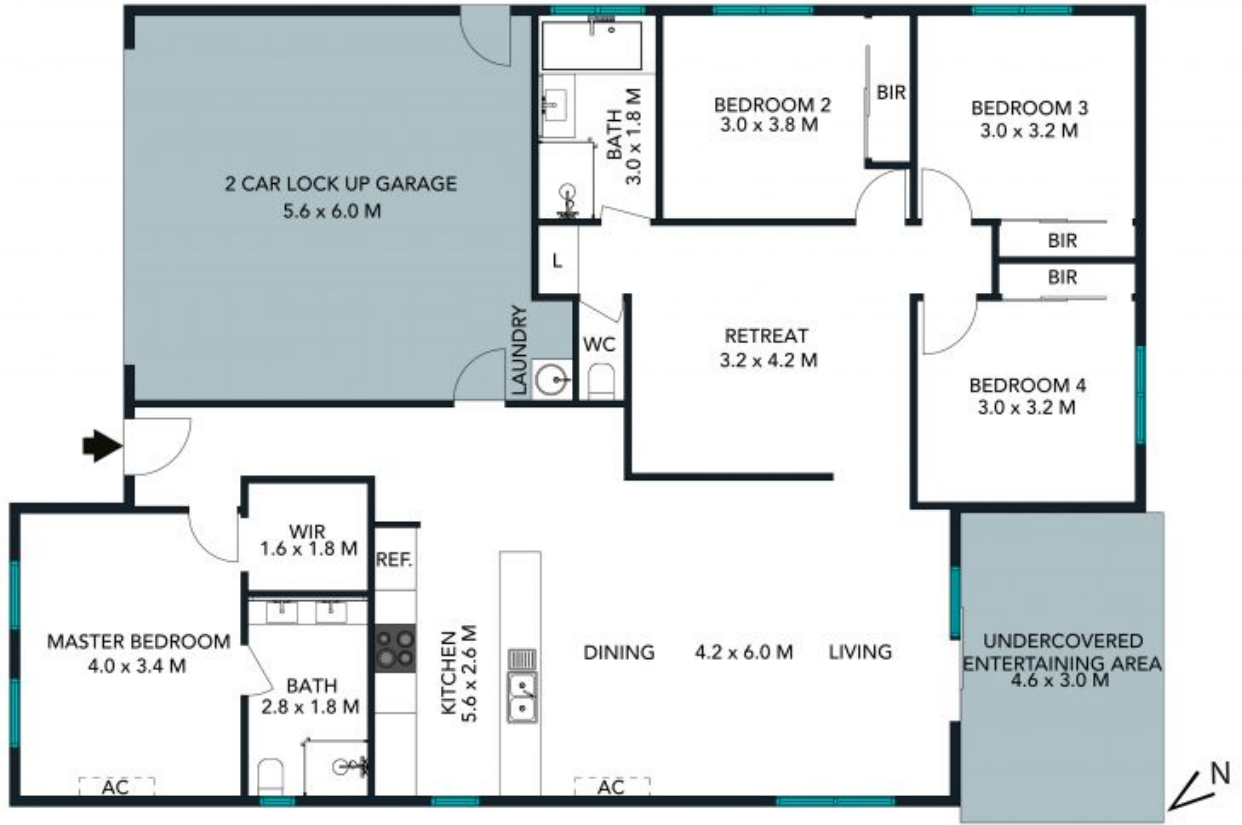
- Four-bedroom home with a secure and grassed backyard
- Open-plan living kept comfortable with split-system a/c and ceiling fan
- Sparkling gas kitchen with stone benchtops and spanking new s/s appliances
- Four robed bedrooms, three anchored by a full bathroom and retreat space
- Master is located on a private wing and boasts an ensuite and walk-in robe
- Covered alfresco area merges with easy care lawns for relaxed entertaining
- Automatic double garage with internal entry, extra parking bays in driveway

**Price:** \$620 per week  
**Bond:** \$2,480  
**Available Date:** 12/04/2024



**Jacqueline Tanko**

02 4089 1122



The floor plan is not to scale, measurements are indicative and in metres. Solar or elements are not to position. Plans should not be relied on. Interested parties should make and rely on their own enquiries. All other information provided has been collected from reliable sources but cannot be guaranteed for accuracy.

6 Gullane Close, Heddon Greta





The floor plan is not to scale, measurements are indicative and in metres. All features included in this 3D plan are for inspiration purposes only. This is not an exact replica of the property or the position of exterior elements. Plans should not be relied on. Interested parties should make and rely on their own enquiries.

6 Gullane Close, Heddon Greta

