



15/5 Keith Waller Rise Casey, ACT 3 1 2

A lifestyle of convenience and quality awaits

Step into this inviting residence and immerse yourself in its modern charm and functionality. Inside, the shared dining-living area welcomes you with its open layout, providing a versatile space for everyday living and entertaining. The large kitchen layout offers convenience and efficiency, while a study space underneath the stairs presents the perfect spot for a workstation or kids place space. A downstairs washroom adds convenience for guests, while a compact laundry space ensures practicality in daily chores. Bedroom 1 boasts a luxurious walk-in wardrobe, offering ample storage for your wardrobe essentials.

All within moments to a range of local amenities including Casey Market Town, Ochre Medical Centre, Busy Bees Childcare, Anytime Fitness, Chemists and more!...

...

Features Overview:...

- East facing from the living
- Two storey floorplan
- Low strata levies
- Close proximity to a range of schools including John Paul II College, Gold Creek Primary...

Price: \$599,000+



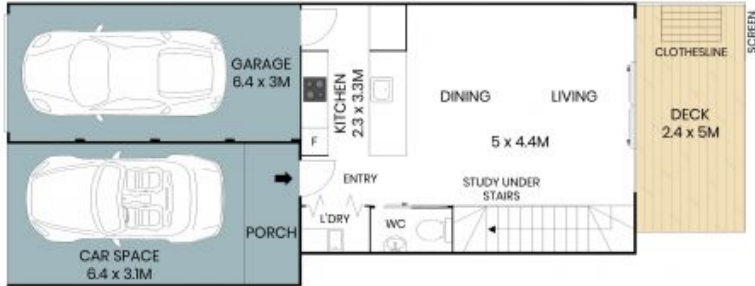
Jess Doolan

0477 775 773



Alex Ford

0487 382 549



Ground Floor



First Floor



The site plan and floor plan are not to scale; measurements are indicative and in metres. Bushes and trees are placed for illustration purposes. Plans should not be relied on. Interested parties should make and rely on their own enquiries. All other information provided has been collected from reliable sources but cannot be guaranteed for accuracy.

15/5 Keith Waller Rise
Casey



Ground Floor



First Floor



The floor plan is not to scale; measurements are indicative and in metres. All features included in this 3D plan are for inspiration purposes only. This is not an exact replica of the property or the position of exterior elements. Plans should not be relied on. Interested parties should make and rely on their own enquiries.