



11 Ashvale Street Kingston, QLD 5 1

### The Family Home You Have Been Looking For

Discover the potential of 11 Ashvale Street, a family-friendly retreat offering practicality and space. This two-level residence prioritises comfort and functionality, boasting a well-designed floor-plan and features tailored to accommodate your family's lifestyle.

Price: **SOLD**



**Erin Cumming**

0466 573 342

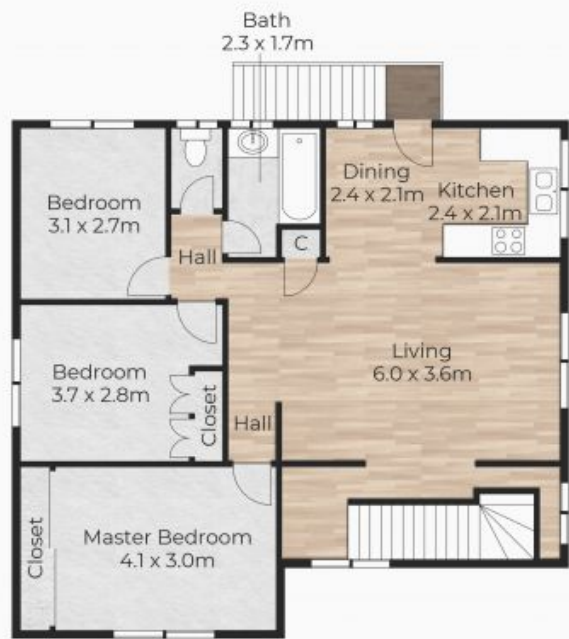


**Ibrahim Sulvic**

0421 564 841



Ground Floor



First Floor

11 Ashvale Street, Kingston

Internal Size: 164sqm | External: 00sqm | Total Size: 164sqm



Erin Cumming | 0466 573 342

This floor plan is for illustrative purposes only. Whilst every attempt has been made to ensure the accuracy of this floor plan, all measurements are approximate only. No responsibility is taken for any errors, omission or mis-statement. Potential purchasers should make their own enquiries as to the accuracy of this floor plan.