

26 Panorama Parade Berkeley Vale, NSW

3 1 1

Fantastic potential in Lakeside suburb!

Positioned amongst idyllic surrounds of Tuggerah Lakes this property offers an abundance of space on a level 765m² block with side access to the rear.

Featuring three great sized bedrooms, original bathroom and a spacious living and dining area, this home is perfect for those seeking an entry level home or the savvy investor looking for a solid brick home with the potential to build a secondary dwelling to generate a greater return on investment (STCA).

With single lock up garage and plenty of off street parking, there is an abundance of space to explore your options. Located within 100m walk of the Tuggerah Lakes walking track and only a 5.5km drive to the Tuggerah M1 onramp and popular Westfield shopping centre makes this a must inspect today!

Over 3m side access allowing the perfect opportunity to add a secondary dwelling (STCA) to maximise your return!
765m² level block in a popular lakeside street!

Price: \$780,000
Council Rates: \$426.00 p/q
Water Rates: \$240.00 p/q



Volkan Akintetik

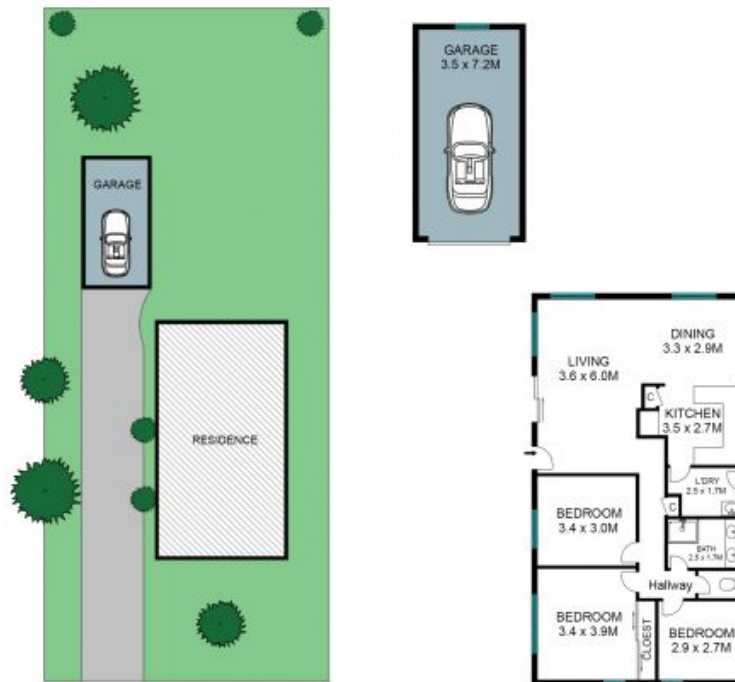
0499 830 247



Reece Caira

0431 013 342

26 Panorama Parade,
Berkeley Vale



Site Plan

The site plan and floor plan are not to scale; measurements are indicative in meters. Bushes and trees are places for illustration purposes. Plans should not be relied on. Interested parties should make and rely on their own enquiries. All other information provided has been collected from reliable sources but cannot be guaranteed for accuracy.