



2/40 Lovell Road Eastwood, NSW



Suburban serenity set in a sought-after pocket

Peacefully nestled at the rear of an exclusive complex of two, this spacious villa is designed to provide a haven for the family, with a fluid floor plan that marries functionality and style. The pinnacle of convenient, carefree living, it's footsteps from local shops and transport, an approx. 350m stroll to Denistone East Public, and is zoned for Marsden High and Epping Boys.

Price: Auction Saturday 27 April 3:15pm
Council Rates: \$366.00 p/q
Water Rates: \$173.29 p/q
Strata Rates: \$100.00 p/q



Jeff Jianfu Luo

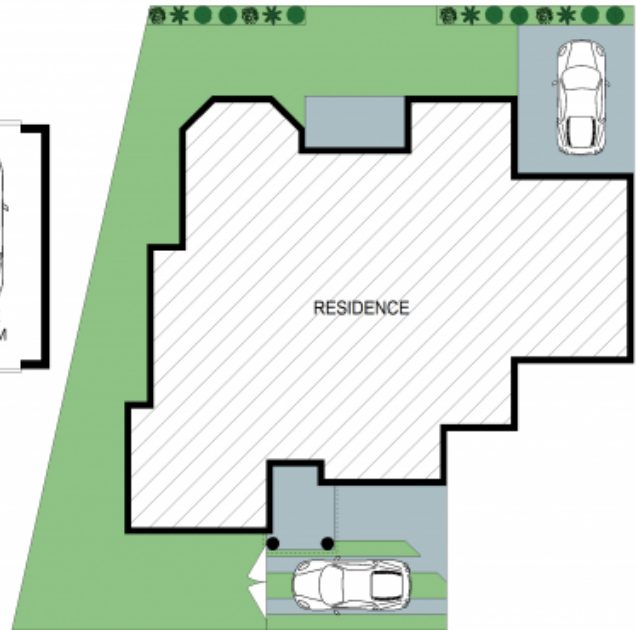
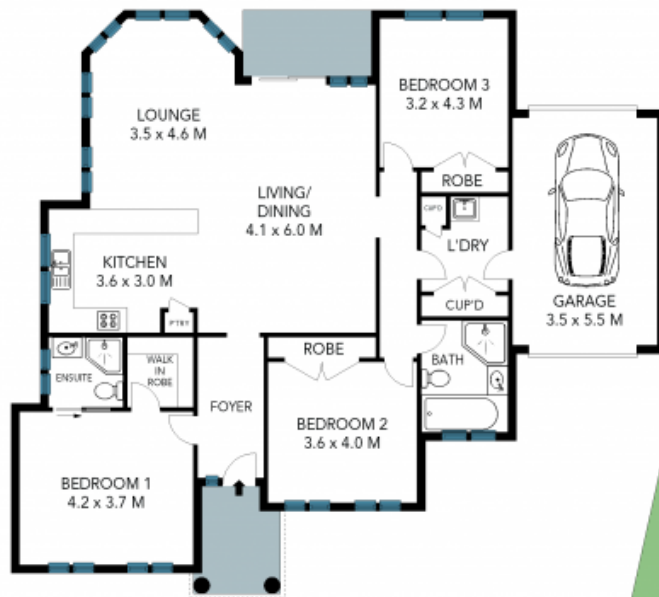
0425 286 668



Wenjie Luo

0433 971 007

2/40 Lovell Road,
Eastwood



SITE PLAN

Land Size: 303sqm



The site plan and floor plan are not to scale; measurements are indicative and in metres. Bushes and trees are placed for illustration purposes. Plans should not be relied on. Interested parties should make and rely on their own enquiries. All other information provided has been collected from reliable sources but cannot be guaranteed for accuracy.