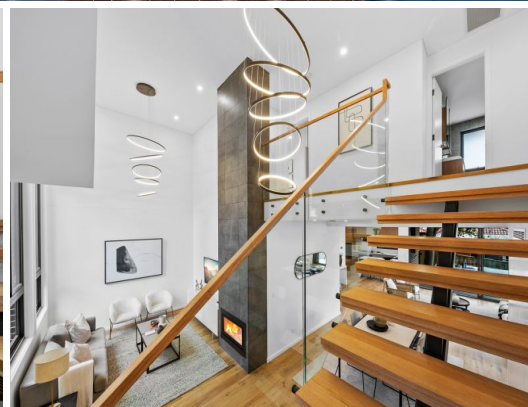
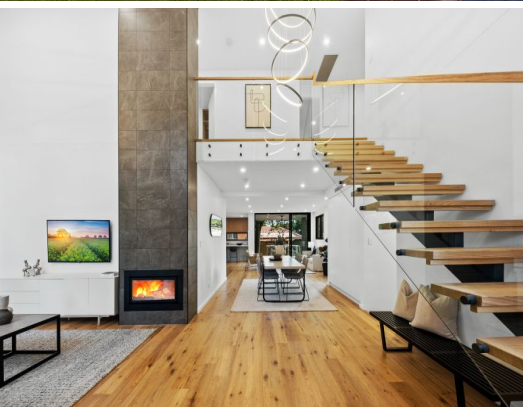


STONE



130a Victoria Road West Pennant Hills, NSW

5 

4 

2 

## Breathtaking brand new entertainer offering privacy and proximity

A masterclass in design, dimensions and aspirational large-scale living, this newly built contemporary haven offers enviable space and family ease that makes the most of its secluded yet convenient position. It showcases the premium quality of deluxe European oak flooring, remote smart lock technology, statement pendant lighting and an astounding 5.3m entry void that spotlights a floating Tasmanian oak stairwell. Terraced outdoor living amidst irrigated landscaped gardens completes this incredible home, as well as proximity to leading government and independent schools.

- Secluded parcel with remote-access entry gate and stunning tree-lined grounds
- Sleek light washed interiors with downlighting and 2.6m ceilings downstairs
- Grand open living spaces as well as a soundproof media/music room or sixth bed
- Butlers' pantry gas kitchen with an alfresco servery and 40mm quartz benchtops
- Premium Ilve appliances including dual ovens and a semi-integrated dishwasher
- Triexta carpeted beds with robes, the master boasting two WIRs and an ensuite
- Ensued guest/in-law accommodation privately positioned on the ground floor

**Price:** For Sale  
**Council Rates:** \$526.00 p/q  
**Water Rates:** \$158.45 p/q



**James Ramsay**

0420 665 913



**Chloe Mawass**

0431 983 240



130 Victoria Road  
West Pennant Hills

STONE



The site plan and floor plan are not to scale; measurements are indicative and in metres. Bushes and trees are placed for illustration purposes. Plans should not be relied on. Interested parties should make and rely on their own enquiries. All other information provided has been collected from reliable sources but cannot be guaranteed for accuracy.