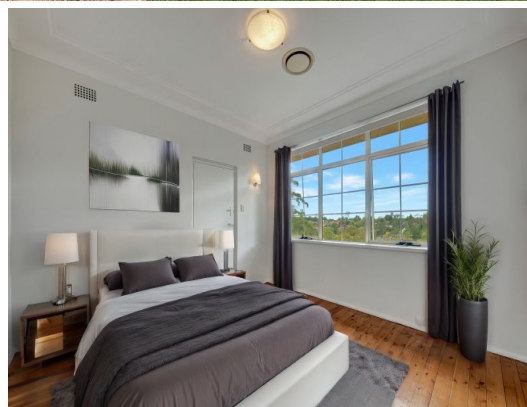


STONE



28B Day Road Cheltenham, NSW



This private and peaceful residence is a 600m walk (approx.) to Cheltenham station and beautiful bushwalks.

Zoned within the esteemed school catchments of Beecroft Public School, Cheltenham Girls' High School and Epping Boys High School, the home offers access to some of Sydney's best public schools.

- Large Luxury Living Spaces and plenty of Storage areas across the property.
- Solar panel installed on property
- Spacious modern kitchen featuring Miele appliances and kitchen island
- Beautiful, glassed sunroom captivating the stunning view of national park at the forefront.
- All 4 Bedrooms with built-in wardrobes and Master bedroom with ensuite
- 2 Large office rooms offering maximum flexibility of space and creativity
- 2 full size bathrooms and extra 2 toilets
- Only 1.1km away from Cheltenham Girls' High School.

Inspect:

Saturday, 18th May 2024 11:30 - 11:45

Price:

\$1200 per week

Available Date: 13/05/2024



Daniel Yao

8893 2245

28B Day Road
Cheltenham

STONE



SITE PLAN



The site plan and floor plan are not to scale; measurements are indicative and in metres. Bushes and trees are placed for illustration purposes. Plans should not be relied on. Interested parties should make and rely on their own enquiries. All other information provided has been collected from reliable sources but cannot be guaranteed for accuracy.