



427/17-19 Memorial Avenue St Ives, NSW 2 2 2

Immaculate oversized apartment with leafy aspect

LOCATED IN BLOCK C, ENTRY AND BEST PARKING VIA STURT PLACE

- Oversized executive apartment - 135sqm on title, private with a leafy outlook
- High ceilings with free flowing living space offering effortless indoor and outdoor living
- Stone crafted kitchen with stainless steel gas appliances and integrated dishwasher
- Two generous bedrooms with mirrored built-ins, master has an ensuite with bath
- Deep full length north facing balcony partially covered for all-season alfresco dining
- European internal laundry, air conditioning, gas heating
- Residents heated indoor pool, spa, sauna, gym and on-site building manager
- Level lift access to secure parking, video security intercom

Council rates: \$363 pq
 Water rates: \$171.41 pq
 Strata rates: \$1,845.30 pq

Price: Under Contract



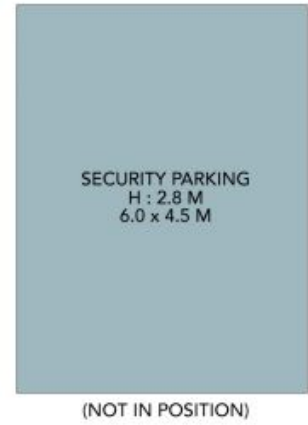
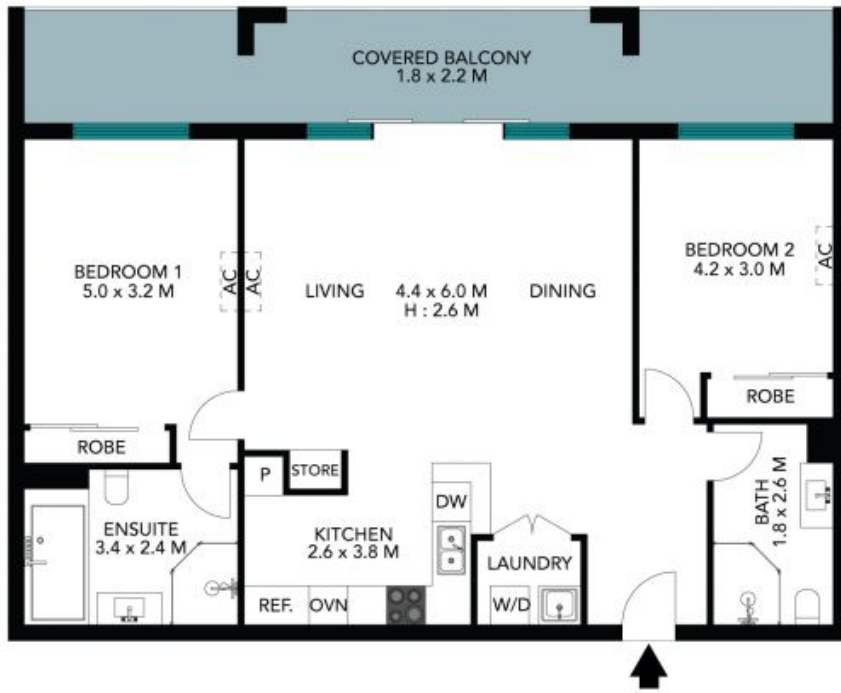
Catherine Wilson

0421 966 570



Catherine Wilson

0421 966 570



The floor plan is not to scale; measurements are indicative and in metres. Fixture elements are not in position. Plans should not be relied on. Interested parties should make and rely on their own enquiries. All other information provided has been collected from reliable sources but cannot be guaranteed for accuracy.

427/17-19 Memorial Avenue
St Ives



The floor plan is not to scale; measurements are indicative and in metres. All features included in this 3D plan are for inspiration purposes only. This is not an exact replica of the property or the position of exterior elements. Plans should not be relied on. Interested parties should make and rely on their own enquiries.