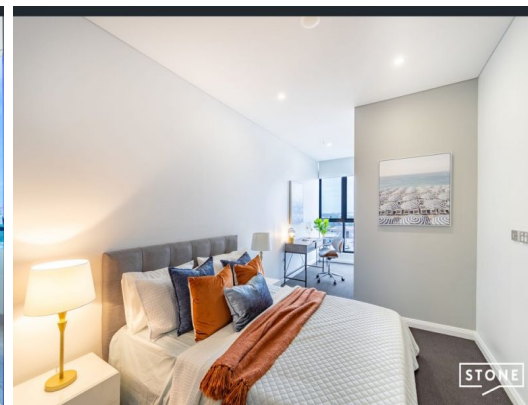
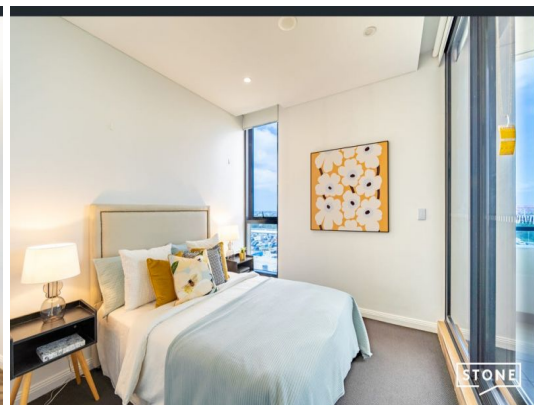
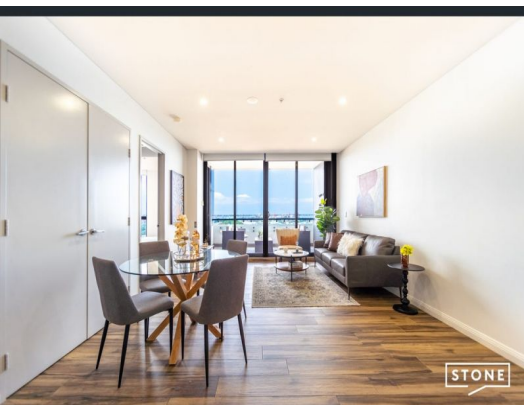


STONE



1045/1 Finch Drive Eastgardens, NSW



High Level 2 Beds Apartment Plus 2 Work From Home Area With Botany Bay View

Price: \$1,100 pw

Available Date: 11/04/2024

This Designer Two Beds Apartment Is Part of Pagewood Green development enjoys views towards Botany Bay. A stylish design features a combined lounge/dining/kitchen area, flowing onto a generous entertainer's balcony. Also included are two sizeable bedrooms and as well as impressive internal storage.

APARTMENT FEATURES:

- High Level Botany Bay View
- 2 spacious bedrooms with built-ins
- 2 work from home/study areas
- Plenty of room for desk and chair in 2 separate dedicated areas
- Miele-appointed gas kitchen, stone benchtops
- Stylish designer bathrooms, ensuite with a freestanding bath
- Internal laundry with dryer, ducted air, secure parking, lift access



Noah (Miao) Xiong

0426 871 030

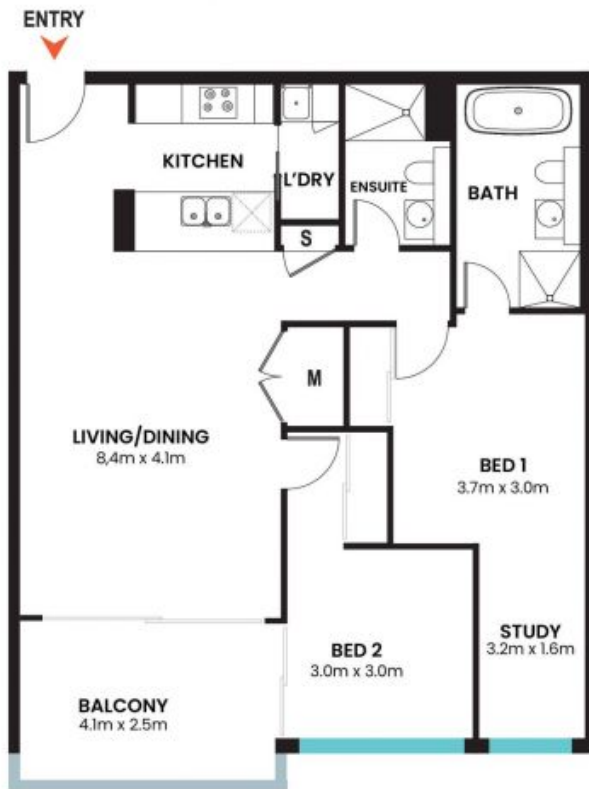


Sabrina (Xiaodan) Wang

0410 701 687

Wang

1045/1 Finch Dr
Eastgardens



The floor plan is not to scale; measurements are indicative and in metres. Exterior elements are not in position. Plans should not be relied on, interested parties should mark and rely on their own enquiries. All other information provided has been collected from reliable sources but cannot be guaranteed for accuracy.