



29/36 Osborne Road Manly, NSW

3 2 1

Luxurious Living on Manly's Eastern Hill

Discover the epitome of executive living in this stunning three-bedroom apartment nestled within the prestigious "Bridgedeck" complex. Positioned atop Manly's exclusive Eastern Hill, this residence offers breathtaking panoramic views and an unrivaled lifestyle.

Upon entering the executive security complex, you'll be greeted by sweeping lawns and meticulously landscaped gardens. Ascend effortlessly via lift access to the spacious apartment, where an abundance of natural light floods the generous living spaces.

Key Features:

- Spacious three-bedroom apartment with an abundance of natural light
- Modern kitchen with ample cupboard space and a dishwasher
- Separate living and dining area, flowing onto a wrap-around balcony with views
- Convenient Location:

Price: Deposit Taken!
Bond: \$5,000
Available Date: 28/04/2024



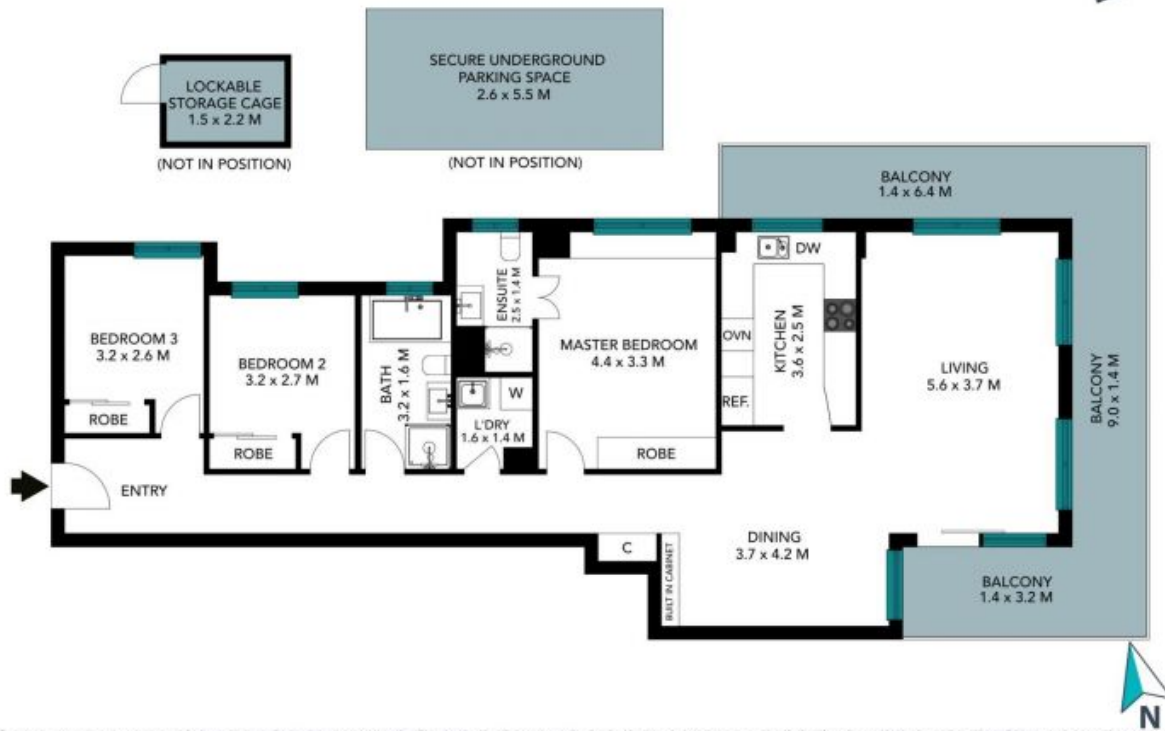
Rodney Scurrall

0499 268 455



Nathan McKeown

0449 841 991



The floor plan is not to scale, measurements are indicative and in metres. Exterior elements are not in position. Plans should not be relied on, interested parties should make and rely on their own enquiries. All other information provided has been collected from reliable sources but cannot be guaranteed for accuracy.