



7 Mistletoe Court Gilston, QLD



## Enveloped by Tranquil Woodland Serenity

Act now to secure this beautifully positioned family retreat. Nestled in the serene and highly sought-after suburb of Gilston on the beautiful Gold Coast, this exquisite property offers the perfect blend of luxury, convenience, and investment potential. As the Gold Coast property market continues to flourish, you won't want to miss the opportunity to secure your slice of paradise in this idyllic location.

- Enjoy 4 large bedrooms, each with its own built-in robes for ample storage.
- Two stylish bathrooms, including an en suite for the master bedroom
- Stay safe with installed security screens and flyscreens throughout
- Ceiling fans adorn all bedrooms and living areas for year-round comfort
- The family room boasts reverse cycle air conditioning for ultimate climate control
- Spread out on 663 square meters of land, perfect for outdoor activities
- The house features a contemporary Colourbond roof for a touch of elegance
- Park with ease in the double automatic lock-up garage.

**Inspect:**

Wednesday, 22nd May 2024 5:00 - 5:30  
Saturday, 25th May 2024 10:00 - 10:30

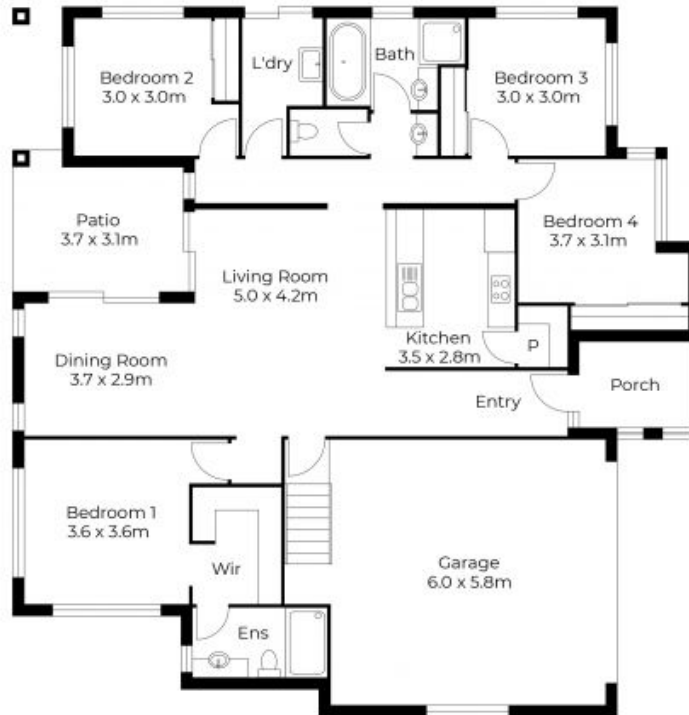
**Price:**

Offers Over \$899,000



**Andrew Colley**

0488 217 803



Floor Plan



Floor plans and site plans are for illustrative purposes only. They are not part of any legal document or title and are subject to errors, omission, and inaccuracies. Whilst every attempt has been made to ensure the accuracy of this plan, measurements of doors, windows, rooms, cupboards etc are approximate only.

APPROXIMATE AREA  
 LIVING AREA : 129 m<sup>2</sup>  
 TOTAL AREA : 178 m<sup>2</sup>



Floor plans and site plans are for illustrative purposes only. They are not part of any legal document or title and are subject to errors, omission, and inaccuracies. Whilst every attempt has been made to ensure the accuracy of this plan, measurements of doors, windows, rooms, cupboards etc are approximate only.

APPROXIMATE AREA  
LIVING AREA : 129 m<sup>2</sup>  
TOTAL AREA : 182 m<sup>2</sup>