



10/93-103 Pacific Highway Hornsby, NSW

2 2 1

Walk to Hornsby Station and Westfield

Designed by multi award winning architects, this contemporary apartment is light filled with an effortless floorplan. With a combined living and dining space, gourmet gas kitchen with stainless steel appliances that flows out onto a spacious balcony. Internal laundry, security intercom, and a single car space with additional storage cage.

In a prized location within minutes from Hornsby Westfield, cafes & restaurants, Hornsby Girls High, The RSL, Barker College and some of the area's most prestigious schools.

Features of the property include:

- Bright, light filled contemporary apartment
- Gourmet gas kitchen with S/S appliances and Stone bench top
- Spacious bedrooms both with built-in robes
- Master with ensuite and bathtub
- Split system Air conditioning and internal laundry
- Single car space with storage cage

...

Price: \$725 Per week
Bond: \$2,900
Available Date: 13/04/2024



Brad Sargent

0413 773 423

10/93 Pacific Highway
Hornsby

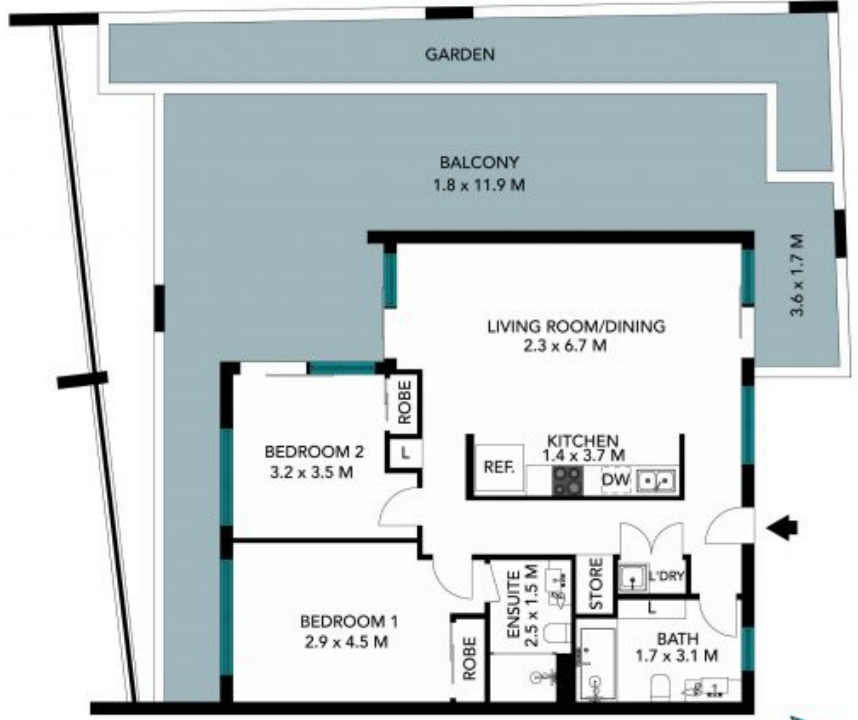
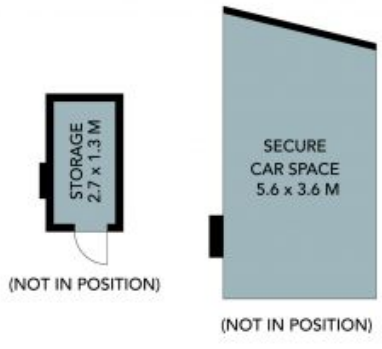
STONE



The floor plan is not to scale; measurements are indicative and in metres. All features included in this 3D plan are for inspiration purposes only. This is not an exact replica of the property or the position of exterior elements. Plans should not be relied on. Interested parties should make and rely on their own enquiries.

10/93 Pacific Highway
Hornsby

STONE



The floor plan is not to scale, measurements are indicative and in metres. Exterior elements are not in position. Plans should not be relied on. Interested parties should make and rely on their own enquiries. All other information provided has been collected from reliable sources but cannot be guaranteed for accuracy.