



32/52 Railway Parade Kurri Kurri, NSW 2 1 1

An incredibly comfortable Kurri Kurri Townhouse

Tucked away into a private set of townhouses, surrounded by local parks and reserves, this pleasant two-bedroom townhouse promises a peaceful and quiet everyday experience. Its two-level layout and bright atmosphere add to its effortlessly comfortable design, perfect for a wide range of buyers. It is conveniently located right between Weston and Kurri Kurri, making it just a 5-minute drive to the Kurri Kurri CBD and Kurri Kurri Public School, as well as the Criterion Hotel.

Both bedrooms can be found upstairs, serviced by a sizable balcony and tidy upstairs two-piece bathroom. Bedrooms are spacious and feature built-in wardrobes and carpeting....

- Conveniently located centrally to Kurri Kurri and Weston, just a short trip the CBD
- Privately situated, tranquil atmosphere, surrounded by parks and reserves
- Frontage parking and garage with interior access plus bathroom; private patio area
- Pleasantly bright atmosphere, comfortably spacious downstairs living area
- Strata fees payable

Price: \$410,000



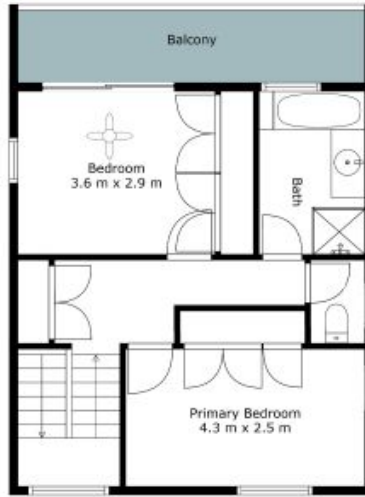
Renee Bean-Wyper

0403 325 076



Jorja Pauling

02 4089 1155



The site plan and floor plan are not to scale; measurements are indicative and in metres. Bushes and trees are placed for illustration purposes. Plans should not be relied on, interested parties should make and rely on their own enquiries. All other information provided has been collected from reliable sources but cannot be guaranteed for accuracy.





Floor 1



Floor 2

The site plan and floor plan are not to scale; measurements are indicative and in metres. Bushes and trees are placed for illustration purposes. Plans should not be relied on, interested parties should make and rely on their own enquiries. All other information provided has been collected from reliable sources but cannot be guaranteed for accuracy.