



113 Australia Street Camperdown, NSW

3 

2 

Old world charm meets everyday modern comfort

Recently renovated, this traditional Camperdown terrace has added modern updates to traditional period features. Timber floors, leadlights and highset ceiling roses are hallmarks of its rich heritage, while an open plan layout and a fluid indoor/outdoor entertaining area elevate the core living space. A short walk to Camperdown Park and some of King Street's most popular coffee spots and eateries.

Price: \$2,025,000
Council Rates: \$390.00 p/q
Water Rates: \$234.00 p/q



Adrian Vassallo

0406 484 994

113 Australia Street
Camperdown



First Floor



Ground Floor



The floor plan is not to scale; measurements are indicative and in metres. All features included in this 3D plan are for inspiration purposes only. This is not an exact replica of the property or the position of exterior elements. Plans should not be relied on. Interested parties should make and rely on their own enquiries.

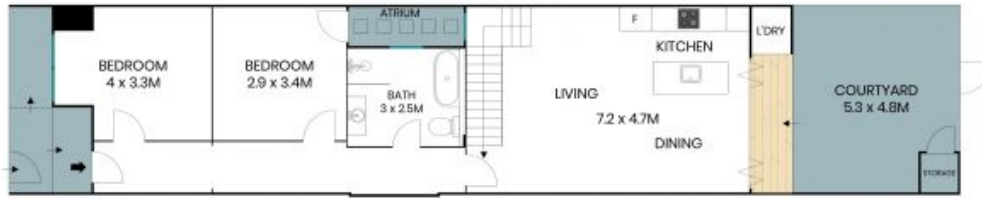
113 Australia Street
Camperdown



Site Plan



First Floor



Ground Floor



The site plan and floor plan are not to scale; measurements are indicative and in metres. Bushes and trees are placed for illustration purposes. Plans should not be relied on. Interested parties should make and rely on their own enquiries. All other information provided has been collected from reliable sources but cannot be guaranteed for accuracy.