



2 Cotswold Close Belrose, NSW 4 2 1

### Charming family home with pool in prized locale

With bright spaces, private outdoor areas and a quiet position in a boutique cul-de-sac, this tastefully presented brick residence is ideal with its smart layout and fresh interiors. A stylish update has given the home a warm feel and created a great living space that focuses on low care entertaining with a convenient indoor/outdoor layout. It is also located in a highly popular family location within easy access to schools, shops and CBD bus services.

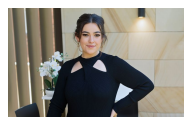
- Formal lounge and dining space plus a bright family living area
- Sheltered BBQ patio and a private garden with swimming pool
- Well-equipped kitchen with breakfast bar plus full bathroom
- Air-conditioned master bedroom includes an ensuite bathroom
- Four double sized bedrooms are each fitted with built-in wardrobes
- Single garage with storage plus a separate shed
- Easy access to Glenrose Shopping Centre and Forestway Shopping Centre
- Short stroll to bus stop with direct CBD and Chatswood buses

**Price:** Leased  
**Available Date:** 20/04/2024



**Ruby Gibson**

0420 466 538



**Alicia Sudol**

02 9949 2822





## 2 Cotswold Close, BELROSE

Not to scale • All measurements are approximate • Drawn for marketing purposes only • Floorplan by © Industrie Media

