

2/636 Willoughby Road Willoughby, NSW

2

1

1

Downsizer / Upsizer Paradise

INSPECT SATURDAY & WEDNESDAY 11:00 - 11:30AM

Set within a small boutique building this sleek, North east facing garden apartment offers a delightful haven.

Crisp internal living and dining areas flow to generous, covered entertainers space and huge wraparound gardens & terraces with inbuilt seating.

Light filled throughout with 2 double bedrooms, designer kitchen and bathroom, internal laundry, storage room and secure parking included.

Ideally located just footsteps to Willoughby Rd shopping, dining, transport & schools and an easy walk to Bicentennial Reserve and Leisure Centre this is an ultra convenient lifestyle home or investment. Pets permitted subject to standard strata approval.

Approximate Outgoings: Strata \$1251.73 pq // Council \$377.00 pq // Water \$171.40 pq

Approximate Sizes: Apartment incl Outdoor 134 sqm + Parking 19 sqm = Total 153 sqm

Disclaimer: All information contained herein is gathered from third party sources we deem to be reliable, however we cannot guarantee its accuracy and interested persons should rel...

Inspect: Saturday, 18th May 2024 11:00 - 11:30
Auction: 25/05/2024 09:00 am

Price: Auction Guide \$1.1m
Council Rates: \$377.00 p/q
Water Rates: \$171.40 p/q
Strata Rates: \$1,251.73 p/q



Hugh Macfarlan

0418 270 993

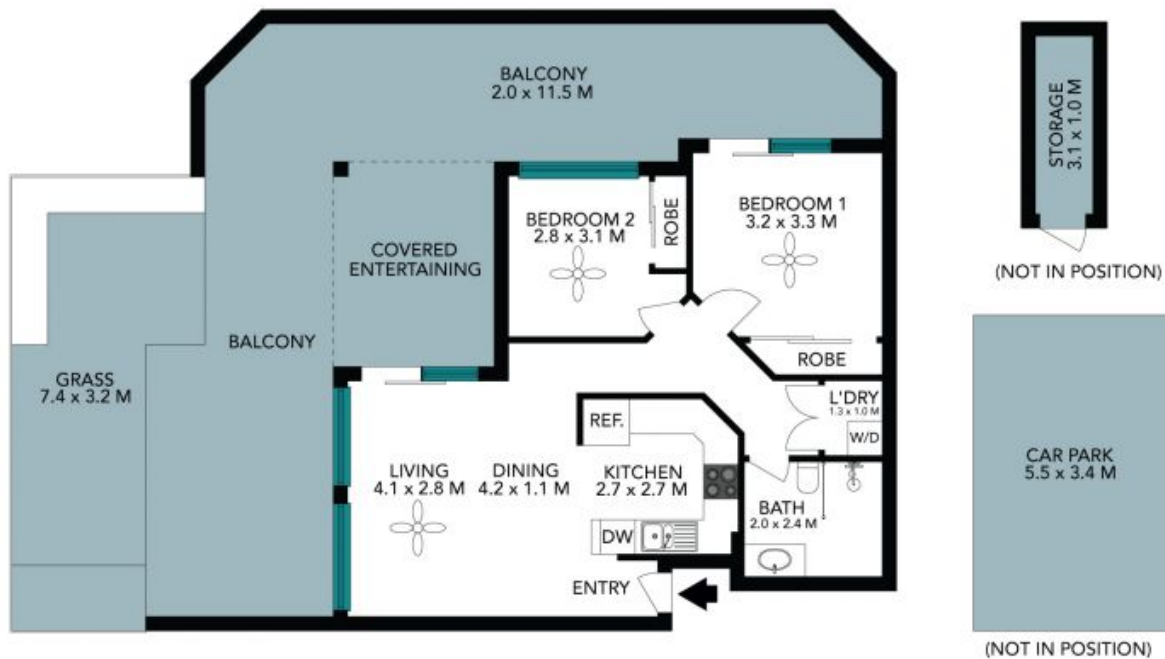
2/636-642 Willoughby Road
Willoughby



The floor plan is not to scale; measurements are indicative and in metres. All features included in this 3D plan are for inspiration purposes only. This is not an exact replica of the property or the position of exterior elements. Plans should not be relied on. Interested parties should make and rely on their own enquiries.

2/636-642 Willoughby Road
Willoughby

STONE



The floor plan is not to scale, measurements are indicative and in metres. Exterior elements are not in position. Plans should not be relied on. Interested parties should make and rely on their own enquiries. All other information provided has been collected from reliable sources but cannot be guaranteed for accuracy.