



410/14 Auburn Street Wollongong, NSW

2

2

1

SOLD BY STONE REAL ESTATE | DARNELL HASELAU & EMILY BOLTON

City-centre lifestyle perfection

An elegant executive offering in a walk-to-everywhere address, this sun-filled north-facing fourth floor apartment has it all. Characterised by its spacious, flowing interiors, bonus study nook and superb entertainers' balcony and its energising urban and escarpment views, this apartment is sure to impress. Enjoy the CBD location being only moments to Wollongong's lifestyle precinct, public and private hospitals, free shuttle bus transport, the train station and Wollongong Central.

- High-quality choice for the downsizer, investor or CBD-based professional
- Neat modern design with floor-to-ceiling glass, downlights, bright north aspect
- Contemporary flow from lounge and both bedrooms to full-width north-facing balcony
- Stone kitchen benchtops and breakfast bar, dishwasher, ample cupboard storage
- Robes throughout, plus master ensuite; sparkling main bath with tub/shower combo
- Convenient proximity to catchment schools + TIGS, parks, beaches and harbour



Darnell Haselau

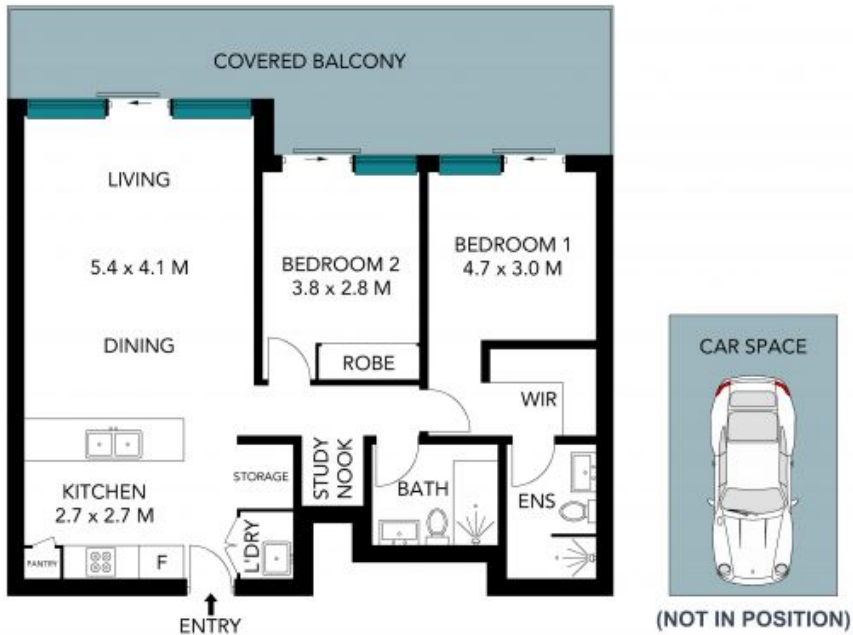
0426 400 240



Emily Bolton

0437 774 036

410/14 Auburn Street
Wollongong



The site plan and floor plan are not to scale; measurements are indicative and in metres. Bushes and trees are placed for illustration purposes. Plans should not be relied on. Interested parties should make and rely on their own enquiries. All other information provided has been collected from reliable sources but cannot be guaranteed for accuracy.