



134 Castle Hill Drive Gaven, QLD

3

3

10

5,694 Sqm Flat Land in One of Gavens Premier Streets...

Where perfection meets opportunity on 1.5 acres of flat, pristine land nestled in one of Gaven's premier streets. Boasting not just one, but two street entrances, this property exudes versatility and potential, offering a rare chance to create your dream life or business sanctuary.

Escape the hustle and bustle of city life as you step onto this tranquil oasis, where peace and serenity abound. With ample parking for multiple vehicles, as well as undercover space for boats, caravans, and trucks, this property is primed for both personal and professional pursuits. The expansive, flat garden beckons with its promise of endless possibilities, from hosting grand outdoor gatherings to realizing the swimming pool of your dreams.

...

Don't miss this rare opportunity to own a piece of paradise on an extraordinary block in this sought-after location. With its massive fully fenced 5,694 sqm of land, dual driveways, mature gardens, and array of features including solar panels, ducted air conditioning, and more, this property is poised to fulfill your every desire. Seize the moment and make 1...

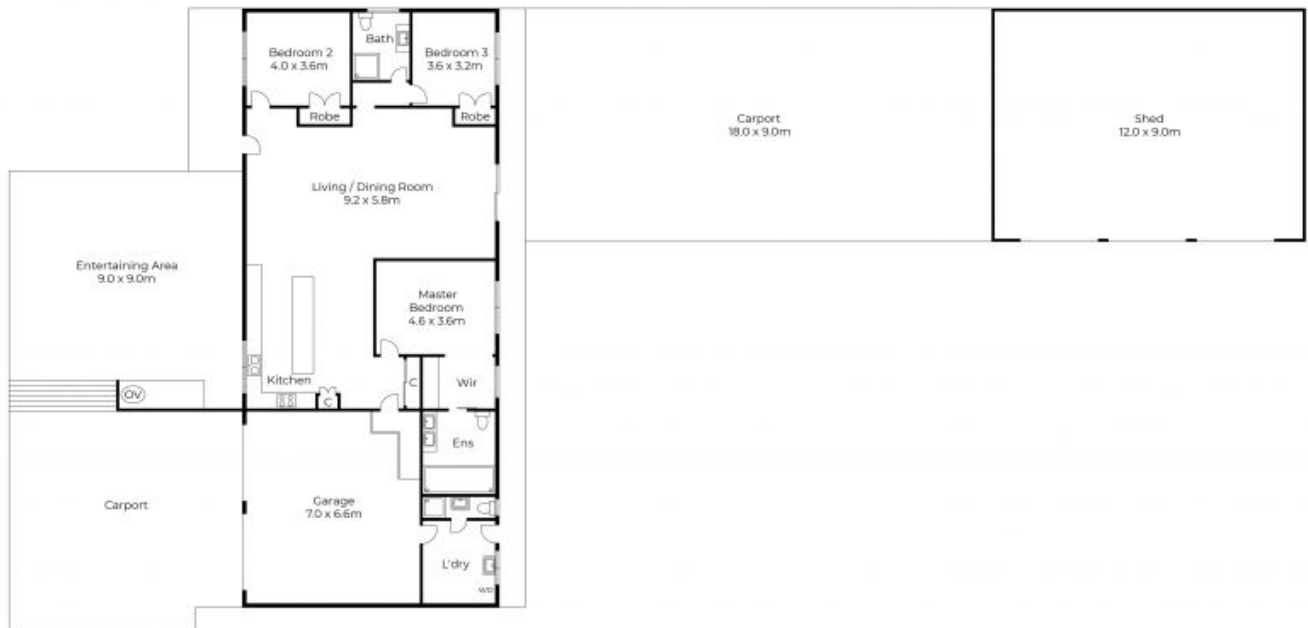
Price:

Offers over \$1,700,000



Andrew Colley

0488 217 803



Floor plans and site plans are for illustrative purposes only. They are not part of any legal document or title and are subject to errors, omission, and inaccuracies. Whilst every attempt has been made to ensure the accuracy of this plan, measurements of doors, windows, rooms, cupboards etc are approximate only.

APPROXIMATE AREA
LIVING AREA : 168 m²
TOTAL AREA : 565 m²



Floor plans and site plans are for illustrative purposes only. They are not part of any legal document or title and are subject to errors, omission, and inaccuracies. Whilst every attempt has been made to ensure the accuracy of this plan, measurements of doors, windows, rooms, cupboards etc are approximate only.

APPROXIMATE AREA
 LIVING AREA : 228 m²
 TOTAL AREA : 344 m²