



21 Van Dyke Crescent McDowall, QLD

5

2

2

Spacious Lowset Home

This spacious lowset home is located in a peaceful and quiet street steps from parkland in a highly sought after pocket of McDowall, mere minutes' walk from kid friendly parkland, kilometers of walking paths and close to every convenience including McDowall State School this wonderful home is waiting for your family.

- 697sqm block only moments' walk from bushland
- Wheelchair accessible
- Solar power system
- Multiple living areas to suit the whole family
- Private outdoor entertaining area
- Fully fenced pet friendly yard with water tank
- Security screens throughout
- McDowall State School catchment

This home offers:

Price:

Offers over \$1,150,000



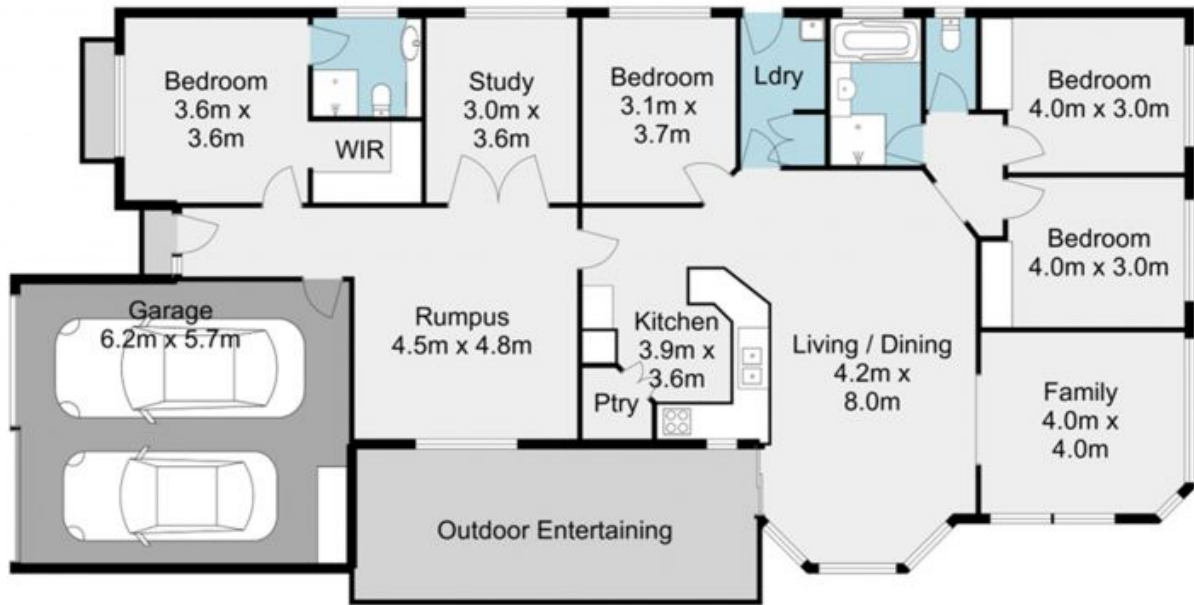
John Bradley

0410 454 718



Matthew Biggs

0499 498 988



The site plan and floorplan are not to scale; measurements are indicative and in metres. Bushes and trees are placed for illustration purposes. Plans should not be relied on. Interested parties should make and rely on their own enquiries.

21 Van Dyke Crescent, McDowall

stonespley.com.au