

11/7 Wulworra Avenue Cremorne Point, NSW

2

1

**Panoramic harbour view**

**Price:** \$3,500,000

Features include:

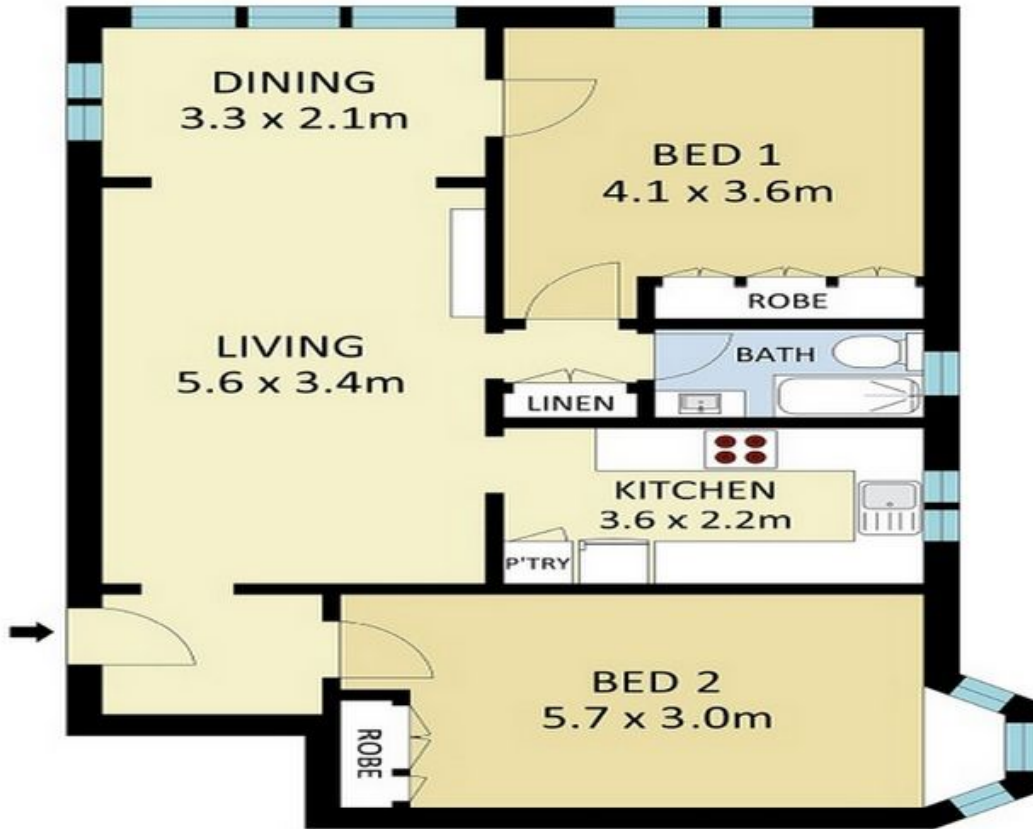
- 2 double bedrooms with built ins
- Renovated kitchen
- High ornate ceilings
- Character bathroom
- Shared storeroom
- Opposite Cremorne Point ferry

Strata Levies: \$1,805.20 pq approx  
 Council Rates: \$310 pq approx  
 Water Rates: \$172 pq approx



**Andrew Thomas**

0421 281 234



SECOND LEVEL



11/7 Wulworra Avenue, Cremorne Point

