

11/7 Wulworra Avenue Cremorne Point, NSW

2 

1 

Panoramic harbour view

Features include:

- 2 double bedrooms with built ins
- Renovated kitchen
- High ornate ceilings
- Character bathroom
- Shared storeroom
- Opposite Cremorne Point ferry

Strata Levies: \$1,805.20 pq approx

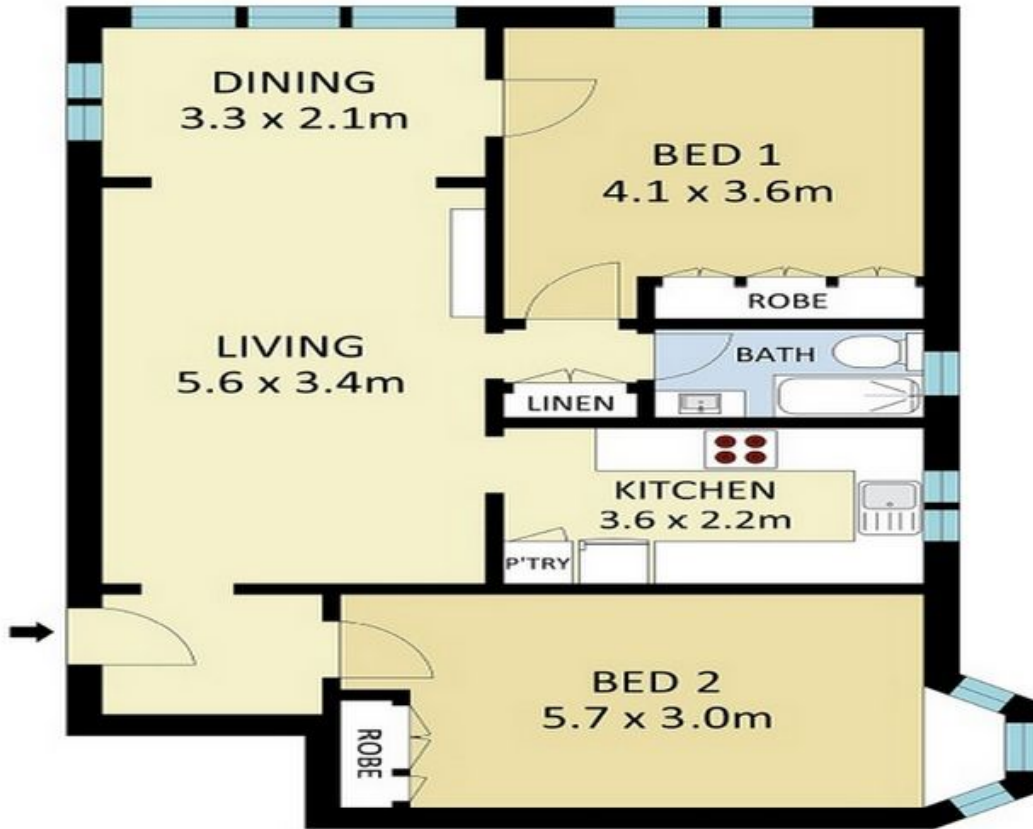
Council Rates: \$310 pq approx

Water Rates: \$172 pq approx



Andrew Thomas

0421 281 234



SECOND LEVEL



11/7 Wulworra Avenue, Cremorne Point

