

STONE



6a Riverside Crescent Marrickville, NSW



Architecturally designed home

APPLICATIONS MUST BE SUBMITTED ONLINE AT www.realestate.com.au

Architecturally designed home with green roof, private yard encompassing well-appointed interiors with leafy surrounds. Perfectly positioned within walking distance to the Cooks River parks, shops, cafes and transport, including train, light rail and bus.

- Open plan lounge/dining, concrete floors
- New kitchen, dishwasher and ample storage
- Ceiling fans, plantation shutters and window coverings throughout
- Sleek bathroom, internal laundry
- Secure parking, remote access, huge storage cage
- Private tranquil garden ideal for entertaining
- Perfectly positioned close to schools, shops and city bound transport

Price: Deposit taken

Bond: \$2,360

Available Date: 15/05/2024



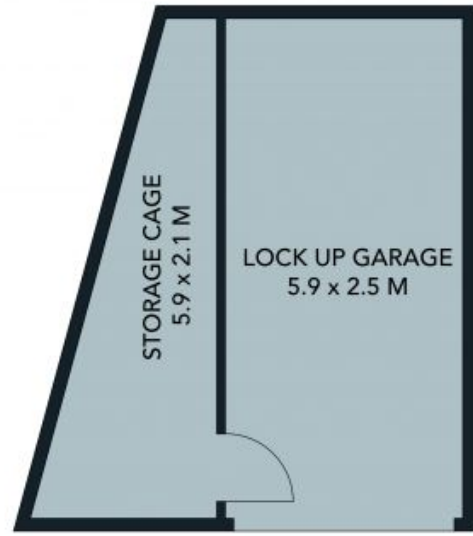
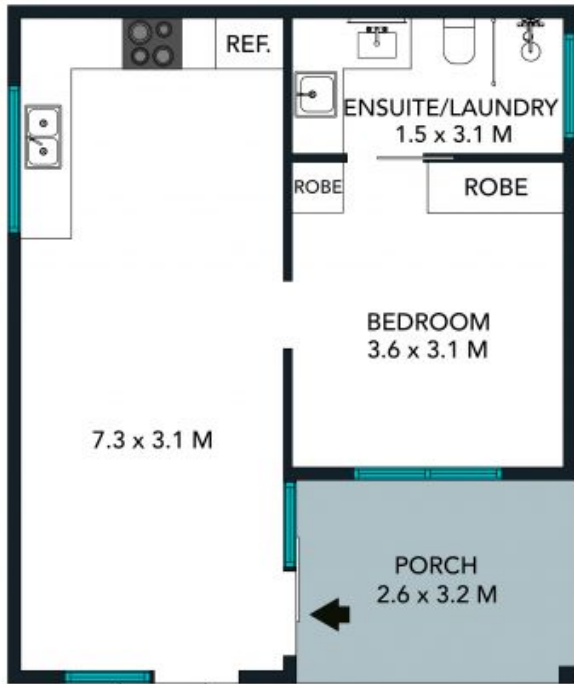
Olivia Makhlof

0412 630 727



Sheree Davies

0421 144 022



(NOT IN POSITION)



The floor plan is not to scale, measurements are indicative and in metres. Color or elements are not to position. Plans should not be relied on. Interested parties should make and rely on their own enquiries. All other information provided has been collected from reliable sources but cannot be guaranteed for accuracy.

6 Riverside Crescent, Marrickville

